



Engineering

Technical Standard

# TS 0420 – Welding requirements (metals)

**Version:** 5.0.

**Date:** 16 December 2025.

**Status:** Final.

**Document ID:** SAWS-ENG-0420

**Confidentiality:** OFFICIAL



**Government of  
South Australia**

© 2026 SA Water Corporation. All rights reserved. This document may contain confidential information of SA Water Corporation. Disclosure or dissemination to unauthorised individuals is strictly prohibited. Uncontrolled when printed or downloaded.

## Issue and version number

Only the current version of the Technical Standard should be used. Earlier versions of this Technical Standard are superseded and must not be used.

This Technical Standard document is not controlled when printed or downloaded. Only online versions from the SA Water website may be used.

## Copyright and intellectual property

© SA Water. All rights reserved.

This Technical Standard has been produced by the South Australian Water Corporation (SA Water). SA Water owns the copyright to all material produced by SA Water.

No part of this Technical Standard may be reproduced, copied or transmitted in any form or by any means, except with the express written consent of SA Water.

Where any material is extracted from this Technical Standard, which may occur only with express written consent of SA Water, that material must be attributed to SA Water as:

© SA Water.

## Intellectual property

Where any material is extracted from this Technical Standard, which may occur only with express written consent of SA Water, that material must be attributed to SA Water as:

© SA Water.

Unless indicated expressly to the contrary, SA Water (and/or any third-party licensors of SA Water) own the copyright and other intellectual property rights, which is contained in the text, graphics, information, designs, data and other content in this Technical Standard.

This Technical Standard may not, without consent in writing from SA Water, or otherwise except to the extent permitted under the *Copyright Act 1968* (Cth), be reproduced for any purpose, including particularly: purposes associated with government operational activities, commercial activity, or education.

SA Water is committed to upholding the rights of owners of copyright and intellectual property, and SA Water will make every effort to contact copyright owners and request permission to reproduce and make available copyright material. If you believe that any content in this Technical Standard may infringe your copyright or other intellectual property rights, please contact us at [legal@sawater.com.au](mailto:legal@sawater.com.au) and we will investigate the position, and if appropriate, endeavour to correct the situation.

If you have access to this Technical Standard and the Technical Standard is used by you or any other entity, for purposes other than to progress SA Water's statutory functions, you could be infringing SA Water's copyright, and or SA Water's intellectual property, and you may face penalties under the *Copyright Act 1968* (Cth), otherwise under law, or under any other policy of SA Water or the South Australian Government that may apply.

## Technical Standards are only applicable for intended use

This Technical Standard may be used by only: SA Water staff, SA Water contractors and persons expressly authorised in writing by SA Water to do so.

This Technical Standard may be used only for application to progress activities associated with SA Water's statutory functions described particularly within the *Water Industry Act 2012* (SA), the *Water Industry Regulations 2012* (SA), and the *South Australian Water Corporation Act 1994* (SA). This Technical Standard may not be used for any other activity outside of the scope of the functions described in that legislation.

If you have access to this Technical Standard, and the Technical Standard is used by you or any other entity, for purposes or activity other than to progress SA Water's statutory functions, the Technical Standard may not be applicable to that other purpose or activity, in which you or that other entity intend to engage, and you could be misinterpreting the contents and you may not correctly apply the Technical Standard. This may result in loss or damage to you, the entity or to other parties, and must be avoided.

This Technical Standard has been prepared to address general and not particular circumstances. This Technical Standard is intended to be used in conjunction with designs and project instructions that are prepared in response to particular circumstances and toward particular objectives. Any user of this Technical Standard must ensure, by independent verification, that the application of the Technical Standard is suitable to any design for any particular project, and to ensure that the Technical Standard is in accordance with the latest relevant Australian standards, legislation, regulations and codes and also with any relevant and applicable policy.

SA Water does its best to provide accurate and up-to-date information in the Technical Standards we prepare, but you should use your own skill and judgement before you rely on it. SA Water does not guarantee or warrant the accuracy, completeness, or currency of the information provided. SA Water recommends that you ask for professional advice from your own advisors on any aspect of your own circumstances.

## Liability disclaimer

This Technical Standard may be used by only: SA Water staff, SA Water contractors and persons expressly authorised in writing by SA Water to do so.

To the extent that the use of the Technical Standard constitutes you acquiring goods or services from SA Water, as a consumer within the meaning of the Australian Consumer Law set out in the *Competition and Consumer Act 2010* (Cth) sch 2, as amended or replaced from time to time, you may have certain rights and remedies (including: consumer guarantee rights) that cannot be excluded, restricted or modified by agreement.

Nothing in this disclaimer operates to exclude, restrict or modify the application of any implied condition or warranty, provision, the exercise of any right or remedy, or the imposition of any liability under the Australian Consumer Law or any other statute, where to do so would contravene that statute or cause any term of this agreement to be void.

You acknowledge and agree that:

- Except for any non-excludable obligations, SA Water gives no warranty (express or implied) or guarantee that information, services and materials contained in this Technical Standard are accurate, complete, current, or fit for any use whatsoever.
- All such information, services and materials are provided "as is" and "as available" without warranty of any kind. This means, for instance, that you should not rely on the accuracy or completeness of any information displayed within this Technical Standard and its suitability for application to your particular circumstances, and furthermore it is your responsibility to contact an appropriate member of our staff if you have any questions about suitability of the Technical Standard to any particular circumstance, before your use of the Technical Standard.

To the maximum extent permitted by law and subject to any non-excludable obligations, SA Water excludes all liability for any loss or damage arising out of access to, use of, or reliance upon information, services and materials contained within this Technical Standard.

## Documents superseded by this standard

The following documents are superseded by TS 0420:

- a) TS 0420 version 4.0.

## Significant/major changes incorporated in this edition

Updates in this version of the Technical Standard include:

- a. Updated in accordance with the SA Water Technical Standard Template Version 8.3 and the Feb 2025 version of the SA Water Style and Writing Standard, including revised disclaimers.
- b. Internal references updated.
- c. Sections 4.7.1, 4.7.2 and 4.8 in TS 0420 Version 4.0 have been moved to Section 3 in this edition.
- d. Section 11, Welding of Aluminium Materials Requirements, added to this edition.
- e. Appendix B - NDT and inspection requirements updated.


## Document controls

### Version history



Version	Date	Author	Comments
			Previously TS-30a
1.0	11-12-2017	Danny London	First Release
2.0	03-05-2019	Danny London	Minor Update
3.0	19-07-2021	Kingsley Brown	Updated
4.0	23-06-2023	AWS Ramon Salazar-Romero	Major Revision
5.0	16-12-2025	Ramon Salazar-Romero	Issued for use.

Template: Technical Standard Version 8.3, 28 October 2025

### Author

Author Name	Author Role	Signature
Ramon Salazar-Romero	Principal Engineer - Materials	<div style="text-align: right;">16/12/2025</div>  <hr/> Ramon Salazar-Romero Principal Engineer - Materials Signed by: SA003587

### Approvers

Approver Name	Approver Role	Signature
Matthew Davis	Manager Engineering Quality and Innovation	<div style="text-align: right;">8/01/2026</div>  <hr/> Matthew Davis Manager Engineering Quality and Innovation Signed by: DA003681
Sofia Chouli	Senior Manager Engineering	<div style="text-align: right;">8/01/2026</div>  <hr/> Sofia Chouli Senior Manager Engineering Signed by: CH005288

# Contents

<b>1</b>	<b>Introduction</b>	<b>10</b>
1.1	Purpose	10
1.2	Glossary	10
1.2.1	Terms and Definitions	10
1.2.2	Abbreviations	12
1.2.3	Terminology	13
1.3	References	14
1.3.1	Australian and international	14
1.3.2	SA Water documents	15
<b>2</b>	<b>Scope</b>	<b>16</b>
2.1	Scope and application of this Technical Standard	16
2.2	Works not in scope	16
2.3	Technical dispensation	17
2.4	Hazards	17
2.5	Structural weld design	17
<b>3</b>	<b>Hold points and witness points</b>	<b>18</b>
3.1	Hold points	18
3.2	Witness points	18
3.3	Non-conformance	18
<b>4</b>	<b>Acceptance prior to commencement of work</b>	<b>19</b>
<b>5</b>	<b>Quality requirements</b>	<b>20</b>
5.1	Quality assurance	20
5.2	Quality management system	20
5.3	Quality management system audits	20
5.4	Quality plan	20
5.5	Construction category	21
5.5.1	Types of traceability	21
5.5.2	Construction category traceability levels	21
5.6	Work identification and traceability	22
5.7	Inspection and test plans	22
5.8	Materials testing	23
5.9	Permits and certificates	23
5.10	Site records	24
<b>6</b>	<b>Welding procedures</b>	<b>25</b>
6.1	Welding procedure specifications (WPS)	25
6.2	Qualification of pressure piping welding procedures	25
6.3	Qualification of structural steel welding procedures	26
6.4	Qualification of aluminium welding procedures	27

6.5	Qualification of spiral welded pipe welding procedures for butt welds	27
<b>7</b>	<b>Welding personnel – roles and responsibilities</b>	<b>28</b>
7.1	Welding supervisor	28
7.2	Welding inspector	29
7.2.1	Independent welding inspector	29
7.3	Non-destructive testing contractor	30
7.4	Weld procedure specification development and acceptance.	30
7.5	Use of subcontractors	31
<b>8</b>	<b>Inspection and testing</b>	<b>32</b>
8.1	Inspection and testing regimes	32
8.2	Inspection and test plan (ITP)	32
8.3	Testing of welds for rolled and longitudinal welded pipe	33
8.4	Testing of welds for spiral welded pipe	33
8.4.1	Alternative testing for spiral welded pipe	33
8.5	Testing of pressure piping and structural steel	34
	Testing	34
8.5.1	and fillet welds	34
8.5.2	Testing of structural welds	34
8.6	Tying into existing piping	34
8.7	Testing requirements for emergency field repairs on pressure piping in metropolitan areas and pump stations	34
8.8	Testing requirements for emergency field repairs on pressure piping in regional areas	35
<b>9</b>	<b>Quality control requirements</b>	<b>36</b>
9.1	Preface	36
9.2	Fittings	36
9.3	Welding standards	36
9.4	Edge preparations	36
9.5	Pressure testing	37
9.6	Additional testing of welds	37
9.7	Welder performance monitoring	37
9.8	Welding and material traceability	37
9.8.1	Pipe requirements	38
<b>10</b>	<b>Welding of stainless-steel materials requirements</b>	<b>39</b>
10.1	General	39
10.2	Welding consumables	39
10.3	Structural welding	40
10.4	Welding distortion	40
10.5	Weld maps	41
10.6	Post-weld treatment and cleaning	41
10.6.1	Grinding and finishing	41
10.6.2	Electropolishing	42
10.6.3	Blasting	42

10.6.4	Pickling and passivation of stainless-steel welds	42
--------	---	----

<b>11</b>	<b>Welding of aluminium materials requirements</b>	<b>46</b>
11.1	General	46
11.2	Welding Consumables	46
11.3	Welding Personnel	46
11.4	Inspection of Completed Product	46
<b>12</b>	<b>Additional construction considerations</b>	<b>47</b>
12.1	Lifting plans	47
12.2	Purchase of fabricated products	47
<b>13</b>	<b>Approved fabricators</b>	<b>48</b>
<b>A</b>	<b>Schedules of hold points, witness points and identified records</b>	<b>50</b>
A1	Schedule of hold points and witness points	50
A2	Schedule of identified records	50
<b>B</b>	<b>NDT and inspection requirements</b>	<b>51</b>
<b>C</b>	<b>Weld review process</b>	<b>55</b>
C1	Request for engineering engagement	57
C2	Weld review process	59
<b>D</b>	<b>Inspection test plans (ITPs) and typical forms</b>	<b>60</b>
D1	Inspection test plans	60
D2	Weld traceability sheet	65
D3	Weld map sample drawing	66
D4	Non-destructive test request sample form	67
D5	Piping fabrication checklist sample form	68
D6	Manufacturers data report (MDR) sample index	70
<b>E</b>	<b>Audit outcome letter (sample)</b>	<b>71</b>
<b>F</b>	<b>Fabricators requiring independent inspection</b>	<b>72</b>

### List of figures

Figure 1:	Patching plate	35
Figure 2:	Weld discolouration levels inside 316L stainless steel (AS 1554.6)	42
Figure 3:	SA Water approval stamp	48

### List of tables

Table 1:	Inspection and testing regimes	32
Table 2:	Weld category requirements for stainless steel structures (AS1554.6)	40

---

Table 3: Acid pickling of stainless steel (ASTM A380, 2006)	44
Table 4: Cleaning passivation with nitric acid (ASTM A380, 2006)	45
Table 5: SA Water approved fabricators	49

# 1 Introduction

SA Water is responsible for the construction, commissioning and operation of an extensive amount of engineering infrastructure.

This standard has been developed to assist in the design, maintenance, construction, and management of this infrastructure such that it is safe and functional.

This Technical Standard also details the application of relevant Australian and/or International Standards, which are noted in tables below the heading of each applicable section. Further guidance as to the respective requirements can be obtained directly from these sources.

## 1.1 Purpose

The purpose of this standard is to detail minimum requirements to ensure that assets covered by the scope of this standard are constructed and maintained to consistent standards and attain the required asset life.

## 1.2 Glossary

Terms and Abbreviations utilised in this Standard are included in the following sections. The definitions presented below are to be used when interpreting this Standard and actions undertaken in relation to this Standard. Where a conflict exists, clarification is to be sought from SA Water.

### 1.2.1 Terms and Definitions

The following is a list of Terms applicable to this document:

Term	Description
<b>Accepted</b>	Determined to be satisfactory by SA Water's Representative.
<b>Allow</b>	Means that the cost of the item referred to is the responsibility of the Constructor
<b>Compliance Statement Report (CSR)</b>	This report ensures compliance with TS 0420 and applicable Australian or International Standards and is based on the review of the MDR documents by a suitably experienced person (who is independent of the Supplier/Manufacturer).
<b>Constructor</b>	The organisation responsible for constructing and installing infrastructure for SA Water whether it be a third party under contract to SA Water or an in-house entity.
<b>Contract</b>	A set of documents supplied to Constructor as the basis for construction; these documents contain contract forms, contract conditions, specifications, drawings, addenda, and contract changes.
<b>Contract Documents</b>	A set of documents supplied to the Constructor as the basis for construction contains contract forms, contract conditions, specifications, drawings, addenda, and contract changes.
<b>Contractor</b>	A person or firm that undertakes a contract to provide materials or labour to perform a service or complete a task.
<b>Designer</b>	The organisation responsible for designing infrastructure for SA Water whether it be a third party under contract to SA Water or a Constructor, or an in-house entity. A Designer is a person who effects design, produces designs or undertakes design activities as defined in the <i>Work Health and Safety Act 2012 (SA)</i> .

Term	Description
<b>Fabrication</b>	All activities required to produce and deliver a component. As relevant, this comprises procurement, preparation and assembly, welding, mechanical fastening, transportation, surface treatment, corrosion protection, inspection, and documentation.
<b>Fabricator</b>	The organisation engaged by SA Water or Constructor to carry out welding/fabrication and or erection activities on/for SA Water infrastructure.
<b>IIW</b>	International Institute of Welding
<b>Informative</b>	Means "provided for information and guidance".
<b>Manufacturer</b>	A person, group, or company that owns and operates a manufacturing facility that provides materials for use in SA Water infrastructure.
<b>Must</b>	Indicates a requirement that is to be adopted in order to comply with the Standard.
<b>Non-destructive Examination (NDE)</b>	An inspection of a weld via visual means and/or other testing (RT, UT, MPI, DPI, or PAUT) that does not destroy the sample.
<b>Person/s</b>	Each word implying a person, or persons shall, where appropriate, also be construed as including corporations.
<b>Provide</b>	Means "supply and install".
<b>Responsible Discipline Lead</b>	The engineering discipline expert identified in the 'Approvers' table (via SA Water's Representative).
<b>SA Water Representative</b>	The SA Water representative with delegated authority under a Contract or engagement, including (as applicable): Superintendent's Representative (for example AS 4300 and AS 2124 etc.) SA Water Project Manager SA Water nominated contact person
<b>Shall</b>	Indicates a requirement that is to be adopted in order to comply with the Standard.
<b>Should</b>	Indicates practices which are advised or recommended, but is not required
<b>Specials</b>	Fabricated sections of pipes such as elbows, tees, or modified line pipes are also used. Manufactured via manual welding processes.
<b>Subcontractor</b>	The organisation engaged by the Constructor to perform works on SA Water assets.
<b>Supplier</b>	A person, group or company that provides goods for use in SA Water infrastructure.
<b>Supplier declaration of conformity (SDoC)</b>	A document issued by the supplier declaring that the products supplied comply with the requirements of the relevant Australian Standard and that the documentation required by the Standard is available for issue.
<b>Technical Dispensation Request Form</b>	This form is part of SA Water's Technical Dispensation Request Procedure which details the process by which those required to comply, or ensure compliance, with SA Water's technical requirements may seek dispensation from those requirements.
<b>Visual Examination – VE (NDE)</b>	A visual examination (also known as visual inspection) of the weld and defects, including visual aids and measuring devices to determine the weld quality, has been achieved concerning alignment, weld size, defect, etc.
<b>Visual Scanning</b>	Determine all welds on the drawings are included and detect gross defects.
<b>Welder</b>	Welder would commonly perform SMAW, MMAW, FCAW, or GTAW
<b>Welder Qualification Period</b>	Demonstration that the Welder is within his Qualification Period for a particular Welding Procedure within a previous six-month period. Reference AS/NZS ISO 9606.1 Clause 10, AS/NZS 1554.1, AS3992 and AS/NZS 2980.
<b>Welding Coordinator</b>	See Welding Supervisor

Term	Description
<b>Welding Inspector</b>	The Welding Inspector be qualified under the Certification Scheme for Welding Inspection Personnel also shall have training and experience in the fabrication and inspection of welded structures (further defined in section 0 Welding inspector).
<b>Welding Operator</b>	A welding operator is one who operates adaptive control, automatic, mechanised, or robotic welding equipment.
<b>Welding Supervisor</b>	All welding shall be supervised by Welder Supervisor qualified, employed by, or contracted to the organization responsible for undertaking the welding work. Qualifications are defined in section 7.1 Welding supervisor.
<b>Work</b>	Elements of a project which require design and/or construction.

## 1.2.2 Abbreviations

The following is a list of Abbreviations, Acronyms and Initialisms used in this document:

Abbreviation	Description
<b>API</b>	American Petroleum Institute
<b>ASTM</b>	American Society for Testing Materials
<b>BMS</b>	Business Management System
<b>CE</b>	Carbon Equivalent
<b>CSR</b>	Compliance Statement Report
<b>DPI</b>	Dye Penetrant Inspection
<b>FCAW-GS</b>	Flux Cored Arc Welding Gas-shielded
<b>FCAW-SS</b>	Flux Cored Arc Welding Self-Shielding
<b>FSBW</b>	Full Strength Butt Weld
<b>GMAW</b>	Gas Metal Arc Welding
<b>GMAW-P</b>	Gas Metal Arc Welding Pulsed
<b>GTAW</b>	Gas Tungsten Arc
<b>HAZ</b>	Heat Affected Zone
<b>ITP</b>	Inspection and Test Plan/s
<b>IWE</b>	International Welding Engineer
<b>IWI-B</b>	International Welding Inspector – Basic
<b>IWI-S</b>	International Welding Inspector – Standard
<b>IWS</b>	International Welding Specialist
<b>IWT</b>	International Welding Technologist
<b>MDR</b>	Manufacturers Data Report
<b>MMAW</b>	Manual Metal Arc Welding
<b>MPI</b>	Magnetic Particle Inspection
<b>MSCACL</b>	Mild Steel Calcium Aluminate Composition Lined
<b>MSCL</b>	Mild Steel Cement Lined
<b>MT</b>	Magnetic particle
<b>NATA</b>	National Association of Testing Authorities
<b>NCR</b>	Non-compliance Report(s)

Abbreviation	Description
NDT/NDE	Non-Destructive Testing/Examination
PAUT	Phased Array Ultrasonic Testing
PT	Penetrant
PWPS	Preliminary Welding Procedure Specification
R <sub>a</sub>	Average Surface Roughness
RFE	Request for Engineering Engagement
RT	Radiographic Testing (X-ray or Gamma)
SA Water	South Australian Water Corporation
SAW	Submerged Arc Welding
SDS	Safety Data Sheet
SMAW	Shielded Metal Arc Welding
TDRF	Technical Dispensation Request Form
TG	SA Water Technical Guideline
TS	SA Water Technical Standard
UT	Ultrasonic Testing
WPQR	Welding Procedure Qualification Record
WPS	Welding Procedure Specification: is a Qualified Weld Procedure that has been developed, tested, and approved
WQMS	Welding Quality Management System
WQTR	Welder Qualification Test Record

### 1.2.3 Terminology

The following is a list of specific interpretations for Terminology used in this standard.

- Where an obligation is given and it is not stated who is to undertake these obligations, they are to be undertaken by the Constructor.
- Directions, instructions and the like, whether or not they include the expression "the Constructor shall" or equivalent, shall be directions to the Constructor, unless otherwise specifically stated.
- Where a submission, request, proposal is required and it is not stated who the recipient should be, it is to be provided to SA Water's Representative for review.
- Each word imparting the plural shall be construed as if the said word were preceded by the word "all".
- "Authorised", "approval", "approved", "selected", "directed" and similar words shall be construed as referring to the authorisation, approval, selection or direction of SA Water's Representative in writing.
- "Submit" mean "submit to the SA Water Representative or their nominated delegate".
- Unless noted otherwise, submissions, requests, proposals are to be provided at least 10 business days prior to work commencing or material ordering (unless noted otherwise).

## 1.3 References

### 1.3.1 Australian and international

The following table identifies Australian and International standards and other similar documents referenced in this document:

Reference	Title
AS 1171	Non-destructive testing – Magnetic Particle Testing of Ferromagnetic Products, Components and Structures
AS 1579	Arc-Welded Steel Pipes and Fittings for Water And Wastewater
AS 1594	Hot-Rolled Steel Flat Products
AS 1665	Welding of Aluminium Structures
AS 1796	Pressure Equipment- Qualification of Welders, Welding Supervisors and Welding Inspectors
AS ISO 3452.6	Non-Destructive Testing – Penetrant Testing of Products and Components
AS 2177	Non-Destructive Testing – Radiography of Welded Butt Joints in Metal
AS 2207	Non-Destructive Testing – Ultrasonic Testing of Fusion Welded Joints in Carbon and Low Alloy Steel
AS 3978	Non-Destructive Testing – Visual Inspection of Metal Products and Components
AS 3992	Pressure Equipment – Welding and Brazing Qualification
AS 4037	Pressure Equipment – Examination and Testing
AS 4041	Pressure Piping
AS 4458	Pressure Equipment – Manufacture
AS/NZS 1554.1	Structural Steel Welding
AS/NZS 1554.3	Welding of Reinforcing Steel
AS/NZS 1554.6	Welding of Stainless Steel for Structural Purposes
AS/NZS 2214	Certification of Welding Supervisors – Structural Steel Welding
AS/NZS 2980	Qualification of Welders for Fusion Welding of Steels – Superseded by AS/NZS ISO 9606.1
AS/NZS 4854	Welding Consumables – Covered Electrodes for Manual Metal Arc Welding of Stainless and Heat Resistant Steels
AS/NZS 5131	Structural Steelwork Fabrication and Erection
AS/NZS ISO 14731	Welding Coordination
AS/NZS ISO 3834.4	Quality Requirements for fusion welding of metallic materials
AS/NZS ISO 9001	Quality Management Systems
NACE MR0103	Materials Resistant to Sulphide Stress Cracking in Corrosive Petroleum Refining Environments

### 1.3.2 SA Water documents

The following table identifies the SA Water standards and other similar documents referenced in this document:

Reference	Title
TS 0105	Quality Requirements
TS 0109	Infrastructure Design
TS 0440	Cathodic Protection Part 1 – Pipelines
TS 0465	Mortar repair systems
TS 0502	Authorised products – gravity and pressure sewer systems
TS 0503	Authorised products – water systems
TS 0504	Authorised products – packaged sewer pump stations
TS 0506	Authorised products – vacuum sewer systems
TS 0507	Authorised products – pressure sewer systems
TS 0730	Stainless steel durability, fabrication and erection
TS 0850	Liquid chemical dosing
TS 0900	Pressure Testing of Pipes

## 2 Scope

### 2.1 Scope and application of this Technical Standard

Reference Standard underpinning this section	Relevant clause/s
AS/NZS/ISO 3834.2	Clause 5 – 5.1, 5.2 and 5.3

This Technical Standard covers the requirement of welding procedure specification preparation, qualification of welding procedures and personnel, workmanship, and inspection requirements for welds related to the welding by Manual Metal Arc Welding (MMAW), Gas Metal Arc Welding (GMAW), Flux Cored Arc (FCAW), Gas Tungsten Arc (GTAW), Submerged Arc Welding (SAW).

Welding shall be carried out in accordance (in order of precedence) with the requirements of:

- AS/NZS 5131 construction categories CC2 or CC3 for structural steelwork and requirements of ISO 3834.2 as specified on the design drawings.
- TS 0420.
- Australian Standards, including safety standards.
- Drawings/Specifications using appropriate plant and equipment.

Welding in this standard (TS 0420) covers the following categories of welding work:

- The manufacture of Spiral Welded Pipe; AS 1579/AS/NZS 1554.1 SP.
- Shop welding of "Specials" (fittings/bends/tapers, etc.); AS/NZS 4041 Class 2P or Class 3.
- Site welding of pipes, pipe fittings, and flanges AS/NZS 4041 Class 2P or Class 3.
- Structural Steel Welding; AS/NZS 1554 Parts 1-7.
- Welding of Aluminium Structures; AS 1665.

This Technical Standard does not remove the responsibility of any party to provide a safe workplace, systems, and methods in accordance with Work Health and Safety Regulations and local Occupational Health and Safety Regulations. Refer to WTIA Tech Note 7-04 Health and Safety in Welding and WTIA Tech Note 22-03 Welding Electrical Safety.

### 2.2 Works not in scope

The following are excluded from the scope of this Technical Standard:

- 'Wet welding' operations.
- Welding associated with the manufacture of pressure vessels.

## 2.3 Technical dispensation

Departure from any requirement of this Technical Standard shall require the submission of Technical Dispensation Request Form (TDRF) for the review and approval (or otherwise) of SA Water Principal Engineer listed in Page 5, on a case-by-case basis.

The Designer shall not proceed to document/incorporate the non-conforming work before the Principal Engineer has approved of the proposed action in writing via the Technical Dispensation Request Form (TDRF).

SA Water requires sufficient information to assess dispensation requests and their potential impact. The onus is therefore on the proponent to justify dispensation request submissions and provide suitable evidence to support them.

Design works that are carried out without being appropriately sanctioned by SA Water shall be liable to rejection by SA Water and retrospective rectification by the Designer/Constructor.

## 2.4 Hazards

N/A

## 2.5 Structural weld design

In addition to undertaking structural design activities to address design actions, the structural welding requirements of this Technical Standard require a Designer to nominate a Construction Category in accordance with AS/NZS 5131 (which shall not be less than CC2).

Selection of Construction Category shall be based on a risk assessment to ensure that the category selected (and the corresponding levels of quality assurance and material traceability) are proportional to the risk to deliver safe, value-for-money infrastructure outcomes for SA Water in accordance with TS 0420.

## 3 Hold points and witness points

### 3.1 Hold points

Hold points applicable to this Technical Standard can be found in Appendix A. Please refer to TS 0105 for further detail on hold points.

### 3.2 Witness points

Witness Points applicable to this Technical Standard can be found in Appendix A. Please refer to TS 0105 for further detail on witness points.

### 3.3 Non-conformance

Please refer to TS 0105 for the requirements relating to non-conformance.

Reference Standards underpinning this section	Relevant clause/s
AS/NZS/ISO 3834.2	Clause 15
AZ/NZS ISO 9001	Clause 10

The Constructor and Fabricator shall promptly advise the SA Water Representative of any non-conformance, together with its location and proposals for corrective action as outlined in TS 0105.

The Constructor and Fabricator shall not proceed to cover up or otherwise incorporate the non-conforming work before the SA Water Representative has approved the proposed action in writing via a Technical Dispensation Request Form (TDRF).

Works that are carried out without being appropriately sanctioned by SA Water may be classed as defective work. Such work or material is liable to rejection by SA Water, who may require the defective work to be removed and replaced.

## 4 Acceptance prior to commencement of work

Reference Standard underpinning this Section	Relevant clause/s
AS/NZS/ISO 3834.2	Clauses 7 – 7.2 & 7.3
	Clause 8.2
	Clauses 14 – 14.1, 14.2, 14.3 & 14.4

The **Constructor** shall submit the following documents to the **SA Water Representative** at contract award and, as a minimum, at least ten (10) business days prior to the commencement work **being fabricated in accordance with this Technical Standard.**

The submission, review, and acceptance of these documents constitute a **HOLD POINT** under this standard (refer to 3.1 and ITP Elements in Appendix A).

The process for initiating a review is via the Request for Engineering Engagement (RFEE) system, where the SA Water **Representative** shall provide the documents and **work order** for the project. The review process map is set out in **Appendix C** and is available on **Engineering's BMS page Engineering (sharepoint.com).**

The documents which shall be provided are:

1. Inspection & Test Plan (ITP).
2. The Qualified Welding Procedure Specification (WPS) intended for use **in** the work, including:
  - a. **Weld Procedure Qualification Record (WPQR).**
  - b. Mechanical and non-destructive test results, (NATA endorsed).
  - c. Material certification.
  - d. **Welding Consumable certification.**
3. **Welder/Welder Operator Qualification Test Records (WQTR)** are within the Welder Qualification Period and are Inclusive of NDE/NDT results.
4. **Welding Supervisor** qualifications.
5. **Welding Inspector** qualifications.

All correspondence, communication, and queries outside the RFEE system are to be directed to [welding@sawater.com.au](mailto:welding@sawater.com.au).

A letter of acceptance will be sent to the **applicant to release** the hold point for each project.

**Note that where documents and supporting information provided is insufficient, incomplete, or incorrect, the RFEE will be returned. Only when updated and complete documents are received will the review commence, with 15 business days to be allowed for the response to be provided. Thus, acceptance should be requested as soon as possible, well before construction.**

## 5 Quality requirements

Reference Standards underpinning this section	Relevant clause/s
AS/NZS/ISO 3834.2	Clause 18
AS/NZS/ISO 3834.3	

### 5.1 Quality assurance

Constructors and Fabricators shall provide sufficient information to enable SA Water's Representative to assess their suitability for the Works.

Quality Documentation, relative to this Technical Standard, shall be:

- Presented in English and legible in a Manufacturers Data Report (MDR) format.
- A standard SA Water MDR Index, or a SA Water approved equivalent.

Appendix D6 contains a sample MDR Index.

### 5.2 Quality management system

Reference Standards underpinning this section	Relevant clause/s
AS/NZS ISO 3834.2	Clause 18
AZ/NZS ISO 9001	All

The Fabricator shall establish, file, and maintain quality records that demonstrate the implementation and use of a Quality Management System (QMS) certified in accordance with ISO 9001.

Confirmation of this certification shall be provided to the SA Water Representative and constitutes a **HOLD POINT** under this Technical Standard.

The Fabricator shall also ensure that standards, systems, processes, and qualifications are appropriate for the material being fabricated and that fabrication work complies with these requirements.

### 5.3 Quality management system audits

Reference standards underpinning this section	Relevant clause/s
AS/NZS/ISO 3834.2	Clause 6 and 18
AZ/NZS ISO 9001	Clause 9.2

The Fabricator shall undertake internal audits of their QMS in accordance with the requirements of AS/NZS ISO 9001.

SA Water's Representative reserved the right to undertake additional audits of the Fabricator's QMS by way of review and verification of records or external inspection and testing.

### 5.4 Quality plan

Reference standards underpinning this section	Relevant clause/s
AS/NZS/ISO 3834.2	Clause 5.1
	Clause 10.1
AS/NZS 5131	Clause 4.5.2

Within 15 days of the Date of Acceptance of the Tender, the Fabricator shall submit a draft Quality Plan (including details of the Fabricator's proposals for the management and control of quality for the Contract) for review by the SA Water Representative.

A finalised Quality Plan shall be provided within 15 days of receiving comments from SA Water's Representative.

## 5.5 Construction category

Reference standards underpinning this section	Relevant clause/s
AS/NZS 5131	Clause 4.7
AS/NZS 5131	Clause 5.2.3

In accordance with the requirements of AS/NZS 5131, the Designer shall assign a Construction Category or Categories to the structure described by the scope of work.

Guidance on the selection of the Construction Category can be found in Appendix C of AS/NZS 5131 and is based on the 'Importance Level' (IL), the 'Service Category' (SC) and the 'Fabrication Category' (FC).

The construction category shall be nominated in the construction specification and/or drawings. As a minimum, Construction Category CC2 shall apply.

### 5.5.1 Types of traceability

This standard has adopted AS/NZS 5131 types of traceability. The three types of traceability are described as follows:

#### 5.5.1.1 Lot

For lot traceability, the material for a lot of identically fabricated components (main members, purlin cleats, etc.) shall be traceable back to a set of parent material test certificates, but an individual test certificate cannot be assigned to an individual piece of material within that lot of components. Material identification shall be transferred when part material is returned to stock and before further being allocated to other jobs.

#### 5.5.1.2 Piece-mark

For piece-mark traceability, the raw material or fabricated component shall be traceable to the parent material test certificates at all stages through fabrication to incorporation into the works on-site, for each piece-mark, of which there may be many individual pieces. Raw material including all plate and section bought or allocated from stock for the work shall be correlated to the test certificates and incoming inspection records. Material identification shall be transferred when part material is returned to stock and before further being allocated to other jobs.

#### 5.5.1.3 Piece

For piece traceability, the raw material or fabricated component shall be traceable to the parent material test certificates at all stages through fabrication to incorporation into the works on-site, for each piece of steel. Raw material including all plate and section bought or allocated from stock for the work shall be correlated to the test certificates and incoming inspection records. Material identification shall be transferred when part material is returned to stock and before further being allocated to other jobs.

### 5.5.2 Construction category traceability levels

This standard has adopted AS/NZS 5131's traceability levels. Unless specified otherwise, the minimum acceptable level of traceability for SA Water works shall be CC2.

A copy of the test certificates or supplier declaration of conformity (SDoC) with purchasing information shall be maintained, and a copy will be provided to the SA Water Representative for all purchased components for all categories.

Traceability is described as follows:

#### 5.5.2.1 For CC2

Test certificates shall be provided for all steel materials. Lot Traceability for main structural members, connections between main structural members, and major plate components (for fabricated plate web girders and the like).

#### 5.5.2.2 For CC3

Test certificates shall be provided for all steel materials, including lot traceability for all items (including cleats, brackets, and the like). Piece or piece mark traceability is required if it is designated in the construction specification.

### 5.6 Work identification and traceability

Reference standards underpinning this section	Relevant clause/s
AS/NZS/ISO 3834.2	Clause 17
AS/NZS 5131	Clause 4.7

The Fabricator shall divide the works into lots for the purpose of:

1. Positive identification and traceability of all work activities, measurements, and tests.
2. Monitoring the quality of product.
3. Submission of work to SA Water's Representative under cover of a conformance report.
4. Rejection of work.
5. Application of dispensation provisions for below-standard work.

The Fabricator is to define a system of lot numbering that is practical for the Works, and that shall be logical, suit the specific application, and be consistent with any specified computerised system. All work and/or activities shall be able to be readily identified with the relevant lot. The lot identification system, site records, and sample numbering system shall allow test results to be positively identified with the lot they represent.

Weld numbers, if required above, shall be maintained by the Contractor and indicated on "As Built" Isometrics or weld maps.

All materials (where unique identifier numbers are required) shall have identification numbers transferred to all cut lengths to maintain the traceability of all materials. Refer to Appendix D2 and D3 for weld traceability.

### 5.7 Inspection and test plans

Reference standards underpinning this section	Relevant clause/s
AS/NZS/ISO 3834.2	Clause 14
AS/NZS/ISO 3834.3	
AZ/NZS ISO 9001	Clause 8

The Fabricator shall submit Inspection and Test Plans (ITPs) covering all materials supply, construction/installation, and testing/commissioning work elements of the Works in accordance with Section 4.

ITPs shall include, but are not limited to, the following information for each significant activity identified in the relevant process:

- a. Description of the work activity/sequence of activities.
- b. Work item or work lot identification.
- c. Specification requirements/reference.
- d. Person responsible for activity (title).
- e. Witness points, hold points, and checklists.
- f. Inspection/test type and tolerances or other acceptance criteria.
- g. Identification of relevant test procedures and quality records.
- h. Details of test equipment to be used for specified tests.
- i. Sequence and frequency of Tests/inspections.
- j. Identification of records to be maintained of tests, inspections, and trials.
- k. Use of representative samples to demonstrate acceptable standards of workmanship for activities where subjective assessment of quality may be required, for example, finishes.

ITPs will be reviewed and returned to the Fabricator and may be provided with the nomination of specific witness points required by the SA Water Representative.

Fabricators shall provide the SA Water Representative with one copy of each signed-off ITP within 5 working days of completion of the activity to which the ITP relates.

- The number and status of all non-compliances identified in undertaking works shall be recorded in ITPs and attached to the completed ITP. ITPs shall not be considered complete until corrective actions are completed as agreed with the SA Water Representative (Refer to Appendix D1).

## 5.8 Materials testing

Fabricators shall undertake independent laboratory testing as required by later sections of this Technical Standard.

Fabricators must demonstrate the following when procuring independent laboratory testing:

- a. Confirmation that the laboratory is adequately equipped, supervised, staffed and has relevant previous experience.
- b. Relevant certifications (including NATA accreditation where required for each specific proposed test method) are confirmed and sighted.
- c. That testing/inspection requests indicate the testing required and traceability per section 5.5.

SA Water reserves the right to collect samples and undertake any testing necessary to verify that the requirements of this Technical Standard are being adhered to.

## 5.9 Permits and certificates

The Constructor and Fabricator shall obtain all necessary permits, certificates, and approvals from SA Water and other relevant authorities as required to carry out the Works. Copies of the approvals, permits, etc., are to be supplied to the SA Water Representative upon receipt.

## 5.10 Site records

Throughout the progress of the work, Fabricators shall ensure that:

- a. Site supervisor/s have ready access to current standard (s) or other document (s) quoted or referred to in the Technical Standard for reference purposes.
- b. A complete set of all up-to-date Drawings, Quality Documents and Specification (s), copies of all variations, and additional drawings issued after the commencement date are maintained.
- c. Records are kept of any change to working drawings or shop drawings that may have been approved for construction purposes such that accurate "as constructed" information is available on completion of the works.

SA Water's Representative reserves the right to inspect daily records at any time during the works.

## 6 Welding procedures

Reference standards underpinning this section	Relevant clause/s
AS/NZS/ISO 3834.2	Clause 10
AS/NZS/ISO 3834.3	Clause 10

All welding procedures used for SA Water infrastructure shall be qualified to the applicable project design standards and submitted for review per the process defined in section 4. At a minimum, all welding procedures shall comply with AS/NZS ISO 3834.2 and 3834.3 format requirements.

Per section 4, welding procedures are approved for specific projects/work packages.

### 6.1 Welding procedure specifications (WPS)

Reference standard underpinning this section	Relevant clause/s
AS/NZS/ISO 3834.2	Clause 10 – 10.2 & 10.3

Fabricators performing welding for SA Water infrastructure shall develop WPS' in accordance with the standards applicable to the material used in the work. The WPS's are to be reviewed and accepted by SA Water in accordance with sections 4 and 7.4.

### 6.2 Qualification of pressure piping welding procedures

Reference standard underpinning this section	Relevant clause/s
AS 3992:2020	Clause 3
	Clause 5 – Table 5.1

Each welding procedure that is intended to be used on SA Water infrastructure shall be suitably qualified in accordance with AS 3992 and this Technical Standard (refer to Section 7.4)

Qualification is intended to demonstrate the suitability of the welding procedure for the material used in the work, specifically:

- The weld can be made without unacceptable imperfections (defects) in the weld deposit and heat-affected zone (HAZ).
- The mechanical properties, such as strength and, if applicable, fracture toughness and hardness, satisfy specified requirements.
- The fabricating organisation and equipment is capable of successfully using the procedure.

Each welding procedure only applies within the limits of the essential variables in the Australian Standard against which the procedure was qualified.

The development of each welding procedure shall be recorded in detail, known as a Procedure Qualification Record (PQR), and shall contain all the significant parameters/essential variables and at least the following information.

1. Welding standard, for example AS 4041 Class 1.
2. A sketch of the joint design.
3. Material(s) grade/type on both sides of the joint.
4. Material thickness – all parts.
5. Method of material(s) preparation.
6. Welding process(s) to be used.
7. Welding position – Flat, Horizontal, Vertical, Overhead, for example, 1G 2G 3G 4G 5G 6G – 6GR 1F 2F 3F 4F 5F 6F.
8. Number and sequence of runs.
9. Current AC, DCEP, DCEN, voltage, amperage, travel speed.
10. Preheat and inter-pass temperature.
11. Heat input (KJ/mm) for each weld pass.
12. Interim cleaning such as brush, de-slag, grind, chip.
13. Classification and diameter of electrodes/wires.
14. Shielding gas(s)/gas mixtures/flow rates.
15. Surface and/or material treatment post welding heat treatment – i.e., pickled and passivated.
16. Welders name and ID.
17. Supervisors Name and Cert No.
18. Direction of weld travel up, down, push, drag.
19. Qualified material thickness range.

Any Welding Procedure Specification shall be re-qualified when the essential variables of the welding procedures being used vary outside the prescribed limits in the specified standard/code. The Welding Procedure Qualification records shall be submitted to SA Water's Representative for review and approval in accordance with section 4.

Duplex Stainless steel WPS shall record a Ferrite count in accordance with NACE MR0103.

Typical Welding Procedure Specifications (WPS) and Weld Procedure Qualification Records (WPQR) information and templates can be found in the appendices of AS 3992.

### 6.3 Qualification of structural steel welding procedures

Reference standard underpinning this section	Relevant clause/s
AS/NZS 1554.1	Clause 4

Each welding procedure intended to be used on SA Water infrastructure shall be suitably qualified in accordance with AS/NZS 1554.1 and this Technical Standard.

Welding Procedure Specifications (WPS) are required to undergo the same qualification requirements as those stated in section 6.2 above; however, the welding code to be qualified against shall be AS/NZS 1554.1

The qualification of welding procedures to AS/NZS 1554 shall account for the different types and grades of materials covered by AS/NZS 1554: Parts 1, 2, 3, 4, 5, 6, or 7.

## 6.4 Qualification of aluminium welding procedures

Reference standard underpinning this section	Relevant clause/s
AS/NZS 1665	Clause 4

Each welding procedure intended to be used on SA Water infrastructure shall be suitably qualified in accordance with AS/NZS 1665 and this Technical Standard.

Aluminium Welding Procedure Specifications (WPS) are required to undergo the same qualification requirements as those stated in section 6.2; however, the welding code to be qualified against shall be AS/NZS 1665.

## 6.5 Qualification of spiral welded pipe welding procedures for butt welds

Reference standard underpinning this section	Relevant clause/s
AS/NZS 1554.1	Clause 4

Each welding procedure intended to be used in the manufacture of spiral welded pipe for use in SA Water's network shall be qualified by the Pipe Supplier and in accordance with AS 1579 and this Technical Standard.

Welding Procedure Specifications (WPS) are required to undergo the same qualification requirements as those stated in Section 6.2. However, the welding code to be qualified against shall be AS/NZS 1554.1 (SP).

## 7 Welding personnel – roles and responsibilities

### 7.1 Welding supervisor

Reference standards underpinning this section	Relevant clause/s
AS/NZS ISO 14731	Welding Coordination
AS/NZS/ISO 3834.2	Clause 6
	Clause 7.3

The Welding Supervisor is equivalent to the Welding Coordination Role specified in AS/NZS ISO 14731 and shall be responsible for:

1. Overseeing the production welding process, including, but not limited to:
  - a. Witnessing the execution of production welding.
  - b. Ensuring all Welding Procedure Specifications being used have been approved by SA Water.
  - c. Confirming that joint fit-up meets the required standards.
  - d. Ensuring pre-weld, in-process weld, and final welding inspections are completed.
2. Ensuring that only qualified welders are engaged in production work.
3. Preparing test requests for the specified Non-Destructive Testing (NDT) on each component and piece.
  - a. The work of each welder shall be properly represented in the NDT process.

The Welding Supervisor shall hold the appropriate Welding Qualification as described below (based on the type of fabrication being undertaken) and be approved by SA Water as described in section 4:

- a. Pressure Equipment:

IWE, IWT, or IWS or AS 1796 Certificate 10.

- b. Structural:

IWE, IWT, IWS, AS 1796 Certificate 10 or AS/NZS 2214.

The use of other qualifications/certifications must be approved via a TDRF.

A qualified Welding Supervisor may delegate minor tasks to suitably qualified personnel. However, such delegation shall be marked in a Welding Coordination roles and responsibilities matrix **and must be approved** by SA Water via a TDRF. The nominated Welding Supervisor remains responsible for all welding supervision and inspection tasks on the project.

The Fabricator shall provide details of the Welding Supervisor's qualification(s), certification, and experience records to the SA Water Representative prior to the commencement of any welding, as provided in section 4.

## 7.2 Welding inspector

Reference standards underpinning this section	Relevant clause/s
AS/NZS 5131	Table 7.4
AS/NZS ISO 3834.2	Clause 5
AS/NZS ISO 14731	Welding Coordination – Tasks and Responsibilities

The Welding Inspector shall be responsible for:

1. Conducting a technical review in accordance with AS/NZS ISO 3834.2 or 3834.3 clause 6. This review shall include all drawings, specifications, documentation, requirements for welding and weld planning.
2. Inspecting the required percentages as provided in Appendix B across all items, joint types, welders, and weld procedures.
3. Validating that NDT results comply with the requirements of this Technical Standard.
4. Providing a written report containing the results of the technical review, inspections, and NDT (including, but not limited to, weld mapping, preparation/fit up inspections, and final visual inspections) that is signed by the Welding Inspector showing the fabricated item meets the requirements of this Technical Standard.

The Welding Inspector shall hold the appropriate Welding Qualification as described below (consistent with the type/category of fabrication being undertaken), and the Fabricator shall provide details of the Inspector's qualification(s), certification, and experience records to SA Water's Representative as described in section 4:

a. Pressure Equipment:

- IWE, IWI-S, IWT or AS 1796 Certificate 10.

b. Structural (listed in order of seniority as defined in AS/NZS 5131 – Table 7.4):

- IWE, IWT, IWI-B (Basic), IWI-S, IWS, AS 1796 Certificate 10 or AS/NZS 2214 (Supervisor).

The use of other qualification/certification must be approved via a TDRF.

### 7.2.1 Independent welding inspector

#### 7.2.1.1 Use of independent welding inspector

The use of a third-party, independent welding inspector may be required under one of the following provisions:

1. An increased testing and inspecting regime are nominated by SA Water (via the SA the Designer or the contract specification) per section 8.1.
2. The SA Water Representative nominates that an Independent Welding Inspector is to be used.
3. Where a Fabricator has been listed in Appendix F:
  - a. Performance of weld inspections completed by these Fabricators have been identified by SA Water to be incorrect, inaccurate, inadequate/incomplete, or otherwise erroneous.
  - b. Fabricators will be notified via formal written notice (prior to Appendix F being updated) and provided with an opportunity to raise a corrective action under their quality management system. This corrective action must satisfactorily address shortcomings of internal inspection activities (and be validated as having done so) and correct the non-conforming work identified by SA Water.
  - c. Fabricators listed in Appendix F may continue to undertake work for SA Water infrastructure, subject to independent welding inspection being undertaken. Fabricators listed in Appendix F may apply to have their listing removed, subject to

demonstrating systems have been implemented to address section 7.2 of this Technical Standard.

- d. SA Water's decision in listing a Fabricator in Appendix F is final, and not subject to appeal.

### 7.2.1.2 Requirements of Independent Welding Inspector

Where required by section 7.2.1.1, an Independent Welding Inspector shall:

1. Be engaged directly by the Constructor.
2. Be engaged to undertake the activities noted in section 7.2.
3. Possess the required qualifications as detailed by section 7.2.
4. Be independent of the Fabricator.

The Inspector is not intended to be present for the entire welding operation. Additional inspections should be conducted at the inspector's discretion to ensure they are confident the quality requirements are met.

Details of the Independent Welding Inspector shall be submitted to the SA Water Representative before their engagement, representing a **WITNESS POINT** under this standard.

## 7.3 Non-destructive testing contractor

Reference standard underpinning this section	Relevant clause/s
AS/NZS/ISO 3834.2	Clause 6 Sub-Contracting
	Clause 8 Inspection and Testing Personnel

The Non-destructive Testing (NDT) Contractor provides the following test/inspection services:

1. Radiography Testing (RT).
2. Ultrasonic Testing (UT).
3. Magnetic Particle Inspection (MPI).
4. Dye Penetrant Inspection (DPI).

NDT services shall be engaged by the Fabricator in accordance with the requirements of section 7.5, with an example request form provided in Appendix D4.

Each NDT Technician shall have the appropriate qualifications and experience for the inspection technique, and the NDT contractor Company shall be NATA-accredited for the methods.

A report of the results and subsequent test shall be provided to the Fabricator and shall be provided to SA Water via the Welding Inspector's report (refer to section 0) and also upon request.

An Independent Welding Inspector (refer to section 7.2.1) and an NDT Technician may be the same person, subject to satisfying this Technical Standard's relevant qualification, experience, and engagement requirements.

## 7.4 Weld procedure specification development and acceptance.

Reference standards underpinning this section	Relevant clause/s
AS/NZS/ISO 3834.2	Clauses 10.2 & 10.3
AS/NZS 5131	Clause 7.4.1

The compilation and acceptance of a Weld Procedure Specification (WPS) shall be undertaken by one of the following:

1. Qualified Welding Supervisor (refer to Section 7).
2. International Welding Specialist (IWS).
3. International Welding Engineer (IWE).
4. International Welding Technologist (IWT).

The witnessing or running of the weld procedure or welder qualification must be done by:

- Qualified Welding Supervisor (as stated in section 0).

The compilation of a WPQR/WQR can be done by:

- a. Qualified Welding Supervisor (as stated in section 0 above).
- b. IWI-C.

The name and qualifications of the person producing the WPS document or running the testing shall be clearly stated in the WPQR or WQR.

## 7.5 Use of subcontractors

Fabricators utilising subcontractors to undertake fabrication activities covered by this standard remain responsible for ensuring compliance against the requirements of this Technical Standard. In engaging subcontractors (including those providing NDT services), it is expected that a Fabricator:

1. Establishes a purchasing procedure that ensures the requirements of this section are satisfied.
2. Establishes a system to maintain and document inspections (or other activities) sufficient to ensure that subcontracted work meets the specified requirements.
3. Provides the subcontractor with all necessary information to meet the requirements of this standard for the scope of work being undertaken by the subcontractor.
4. Obtain from the subcontractor all necessary records and documentation to ensure the requirements of this standard can be met.

The subcontractor shall fully comply with the relevant requirements of this standard for the scope of work undertaken and supply complete documentation sufficient to meet the requirements of this standard to the Fabricator for verification and inclusion in the MDR as required.

## 8 Inspection and testing

Inspection and Testing shall be undertaken in accordance with the provisions of this section, which are summarised in Appendix B.

SA Water reserves the right to attend, witness, and audit all aspects of fabrication activity or documentation associated with any work used in SA Water's infrastructure.

The frequency of Non-Destructive Examination (NDE) stated in Appendix B applies to each weld procedure/welding operator for each Fabricator. Representation of each operator against pipe diameters/wall thicknesses within the WPS limitations shall be obtained when applying the nominated percentages.

### 8.1 Inspection and testing regimes

Reflecting the varying levels of risk and criticality of SA Water's infrastructure, two inspection and testing requirements may be applied, with their details and application provided in Table 1. The Designer is responsible for specifying the testing regime for each project. If a testing range is outlined in Appendix B, the Designer must choose the appropriate percentage of testing.

Table 1: Inspection and testing regimes

Inspection and testing regime	Requirements	Notes
<b>Standard</b>	Standard Inspection and Testing Requirements – Refer to Appendix B	The minimum inspection and testing requirements of TS 0420 <sup>1</sup> .
<b>Increased</b>	Increased Inspection and Testing Requirements – Refer to Appendix B	Inspection and testing requirements where project risk and criticality are noted in the design and/or contract specification (by the Designer or SA Water Representative) as requiring elevated levels of quality assurance to ensure project outcomes are achieved.

### 8.2 Inspection and test plan (ITP)

Reference standard underpinning this section	Relevant clause/s
AS/NZS/ISO 3834.2	Clause 14

The Fabricator shall:

1. Provide an Inspection and Test Plan (ITP) for the specific welding work:
  - a. This is to be provided to the SA Water Representative per the process outlined in section 4.
  - b. A standard SA Water sheet (or an approved equivalent) shall be used, and a sample ITP is provided in Appendix D1.
2. Ensure the ITP contains the necessary elements to ensure the completed welding work complies with the specified standards/codes and/or other specified requirements.
3. Ensure that the ITP contains the necessary witness points for the SA Water Representative to audit the welding work to comply with the specified WPS and standard requirements.

<sup>1</sup> Specialist welding categories (such as fabrication of pressure vessels or fatigue-purpose welds) shall adopt the increased inspection and testing regime by default.

## 8.3 Testing of welds for rolled and longitudinal welded pipe

All rolled and welded pipe (circumferential and longitudinal weld) greater than 114mm in diameter and a pressure rating less than 6.8 MPa shall be manufactured to AS 1579.

Complete penetration butt welding shall be conducted with a minimum of one internal and one external pass unless otherwise approved by SA Water.

Pipes which are not hydrostatically tested shall be 100% non-destructively tested via radiograph (RT) or ultrasonic testing (UT) to AS/NZS 1554.1 Structural Purpose (SP).

## 8.4 Testing of welds for spiral welded pipe

All Spiral Welded Pipes shall be subject to factory hydrostatic strength tests in accordance with the requirements of section 5 and Appendix F of AS 1579.

In addition to the hydrostatic testing, non-destructive testing by Radiography (RT) or Ultrasonic (UT) methods in accordance with AS 1554.1 Category SP with acceptance standards as specified in AS 1554.1 shall be undertaken for:

- a. 100% of the welds for the first two (2) pipes of each pipe size.
  - In the event of a test failure, 100% of the following pipe length from the mill is required to undergo non-destructive testing until compliance is achieved.
- b. After compliance against point a), 2 pipe random lengths taken from the production run shall each be tested radiographically at 8 randomly chosen locations on each pipe or ultrasonically for 10% of the total weld in 4 randomly selected locations.
  - In the event of a test failure, 100% RT or UT testing of the welds for a pipe length on either side (upstream and downstream) of the initially tested pipe length shall occur.

The Pipe Supplier shall provide test certificates issued by a National Association of Testing Authorities (NATA) accredited laboratory for Destructive and Non-Destructive Testing (except hydro-static testing of pipe joints) as part of the MDR.

Material grade of Welded Pipe intended for supply to SA Water shall comply with the requirements of AS1579. Material certificates shall be provided for all pipe materials.

Alternatively, if the supplier chooses not to undertake hydrostatic testing, then 100% of the welds shall be non-destructively tested in accordance with AS 1579 clause 5.1.1. (b).

Test reports shall be prepared in the format presented in this Technical Standard and provided to the SA Water's Representative.

SA Water reserves the right to attend, witness, and audit manufacturing aspects of the production activity or documentation associated with production.

The testing detailed above is intended for each setup of runs for large pipe orders where production will span greater than one day, such as a mains replacement—that is, lengths or more of pipe or more than 100m.

### 8.4.1 Alternative testing for spiral welded pipe

This section is not intended to be an alternative to NDT requirements as outlined in section 8.4 and shall not be applied as such. Alternative testing below applies only to the supply of low volumes/individual lengths of MSCL and MSCACL pipe to replace failed/damaged pipe.

Alternative testing requirements are as follows:

- a. Spiral welded pipe that has been produced and tested per section 8.4 above, as a batch run, requires no further testing needs, provided it can be demonstrated the available pipe(s) is (are) are from the batch run that the testing regime was applied to.
- b. Spiral welded pipe that has not undergone the testing requirements per section 8.4 above will require a minimum of eight (8) randomly selected areas requiring non-

destructive testing by Radiography (RT) or 10% of the total weld in 4 randomly chosen locations by Ultrasonic (UT) methods in accordance with AS1554.1.

- Category SP requirements and acceptance standards shall be applied as specified in AS1554.1.

c. For small quantities such as bursts or minor replacement eight (8) or fewer lengths of pipe (or less than 100m) from supplier stock.

## 8.5 Testing of pressure piping and structural steel

The testing regime of Pressure Piping and Structural welds shall be as per the following sections.

### 8.5.1 Testing of pressure piping butt, branch and fillet welds

The testing regime for the fabrication and welding work of new projects, including steel specials, stainless steel specials, and field tie-in situations, are based on AS 4041 Class 2P (Class 2A for stainless steel). Piping shall be examined in accordance with AS 4037 and as per AS 4041 clause 7.4. Details of the testing regime are summarised in Appendix B.

The testing regime defined in this section also applies to the fabrication for and or within pump stations (defined as being between the first isolation valves outside of the pump station building, on both the upstream and downstream side of the pump).

### 8.5.2 Testing of structural welds

The testing regime for structural welds is presented in Appendix B and applies to fabrication and welding work in both workshops and all field situations (including additions, repairs, and modifications).

## 8.6 Tying into existing piping

When cutting and tying into existing piping, the tie-in location shall have the coating removed (noting that a check of the coating for asbestos may be required before doing so to manage associated hazards).

The surface shall be cleaned (by power tool or abrasive blasting), inspected, and Ultrasonically Thickness tested (by a competent person) to ensure there is sufficient remaining wall thickness on the existing pipe to conduct the tie-in welding.

The wall thickness shall be locally tested at a minimum of eight (8) equally spaced points around the circumference or a full circumferential scan. External pitting losses shall also be considered. If sufficient wall thickness is not able to be confirmed, an alternate location shall be identified and tested.

Inspection and Testing of planned tie-ins shall be undertaken in accordance with the requirements of Class 2P Steel, stated in Appendix B.

## 8.7 Testing requirements for emergency field repairs on pressure piping in metropolitan areas and pump stations

The general testing requirements for Emergency Repairs in Metropolitan areas and within regional Pump Stations (between the first isolation valves outside of the pump station building on both the upstream and downstream side of the pump) are to be the same testing regime as stated in section 1.1.1 for welding of pressure piping in accordance with AS 4041 Class 2P.

## 8.8 Testing requirements for emergency field repairs on pressure piping in regional areas

The testing requirements for Emergency Repairs on pipework (outside of Pump Stations) are based on AS4041 Class 3 piping.

Where it is required to weld a patch plate (or collar and other repairs) onto piping, a Welding Procedure Specification (WPS) is required, and the operator's being within their welder qualification period is also required.

The suitability of all patch Welding Procedure Specifications (WPS's) is required to undergo the exact qualification requirements as those stated in section 6.2. Inspection and Testing requirements shall be as provided in Appendix B.

The patching plate is to have rounded corners, and the weld profile of the deposited weld is to be smooth and free of defects (refer to Figure 1).



Figure 1: Patching plate

## 9 Quality control requirements

### 9.1 Preface

Reference Standards underpinning this section	Relevant clause/s
AS/NZS/ISO 3834.2	Clause 1
AS/NZS/ISO 3834.3	

This standard requires the Fabricator and Constructor to demonstrate to SA Water that welders to be used on SA Water infrastructure are within their welder qualification period and approved to the welding procedure they are working to prior to the commencement of any welding.

This standard requires all Welding Procedure Specifications (WPS) to be appropriately qualified and submitted to SA Water's Representative for review and approval ten (10) business days prior to the commencement of any welding per the process outlined in Section 4.

### 9.2 Fittings

All fittings shall be made from pipe manufactured in accordance with this standard or shall be fabricated from structural steel complying with AS 1594 or AS 3678. The Carbon Equivalent content (CE) shall not exceed 0.40.

The use of pipe manufactured in accordance with API Specification 5L shall be acceptable for branches only (for example, offtakes, scour valves, air valves, etc.). Where such pipe is used, the CE of the material shall not exceed 0.40.

### 9.3 Welding standards

For infrastructure intended for use by SA Water:

- The minimum acceptable construction category for SA Water works shall be CC2 in accordance with AS/NZS 5131.
- The manufacture of Spiral Welded Pipe shall be in accordance with AS 1579 with the welding to AS 4041 Class 2P.
- The welding of pressure pipe shall be to AS 4041 Class 2P or 3.
- The welding of structural steel shall be to AS/NZS 1554.1 SP.
- The welding of stainless steel shall be to AS/NZS 1554.6 Class 2 B II.
- The welding of aluminium shall be to AS 1665 Category B.
- The welding of reinforcement steel shall be AS/NZS 1554.3.

Where there are changes to a welding standard, and the previous revision of the standard has been superseded, each Weld Procedure Specification shall be reviewed by the Fabricator to ensure that all the essential variables and mechanical testing conducted to the previous standard meet the current standard and that changes/updates are made to any documentation and welder qualifications per the Fabricator's QMS.

### 9.4 Edge preparations

Reference standards underpinning this section	Relevant clause/s
AS 4458	Clause 5 (Pressure)
AS/NZS 1554.1	Clause 5.1 (Structural)
AS/NZS ISO 5131	Clause 7.5.1.1

Surfaces and edges to be welded shall be uniform and free from fins, tears, cracks, and other defects that would adversely affect the quality or strength of the weld. Surfaces to be welded and surfaces adjacent to a weld shall also be free from loose or thick scale, slag, rust, grease, paint, and other foreign matter that could prevent proper welding or cause a defective weld.

For stainless steel edge preparations requirements refer to TS 0730.

## 9.5 Pressure testing

Where the scope of TS 0900 covers the scope of fabrication work, hydrostatic testing shall be undertaken and recorded in accordance with the requirements of TS 0900.

## 9.6 Additional testing of welds

Where there is a specific reason to question the quality, competency, or capability of a welder/welding operator, the SA Water Representative may request additional NDT for any welding carried out on any SA Water infrastructure that the welder/welding operator in question has worked on.

Where such testing detects a non-conformance, the Fabricator shall raise a corrective action under their WQMS and bear the cost of the repair and the additional cost of retesting the welds.

## 9.7 Welder performance monitoring

The Constructor and its Fabricator/s shall monitor the performance of welding operators working on SA Water infrastructure, and the Fabricator must maintain the re-validation records for each welder/welding operator (including those of any subcontractor engaged by the Fabricator to undertake work).

Where unsatisfactory welds are produced by a welder/welding operator, the Constructor and its Fabricator will notify the SA Water Representative as soon as the unsatisfactory welds are known (i.e., within two (2) days or before further works).

Should the percentage of unsatisfactory welds exceed 5% for any one operator, the SA Water Representative may request the welder/welding operator be removed from the work and offered training or re-qualification by the Constructor and its Fabricator/s.

The Welder/Welding operator should not be permitted to continue to work until such time/s as it can be demonstrated that the Welder/Welding operator is able to achieve the requirements of the WPS against which defects were recorded. The welder/welding operator is required to restart their qualification process (i.e., requalify and test the next 5 welds of each weld procedure) after 5% defects have been recorded.

## 9.8 Welding and material traceability

The Constructor and/or its Sub-Contractor shall maintain Weld Traceability Records for all welding work carried out on current or future SA Water infrastructure.

Welding consumables shall be traceable to their batch certification and must comply with the requirements of AS/NZS 1554.1 clause 2.3 and AS 3992 Table 2.2.

Standard SA Water weld mapping and weld traceability sheets shall be used (or an approved equivalent), and a sample Weld Map and Weld Traceability Sheet are shown in Appendix D.

The following shall be completed and maintained at the same level as production throughout the fabrication process:

1. Weld Mapping.
2. ITP shall be completed and maintained at the same level as production.

### 3. Material identification and traceability

To be maintained throughout the fabrication, installation and up to and including final inspection.

## 9.8.1 Pipe requirements

Pipe identification (heat/unique number) shall be transferred to all cut lengths.

Each spool shall have the line number and spool number marked. If the spool is flanged, the marking shall be on the outer diameter of a flange.

Markings may be painted legibly on each pipe spool. However, the paint shall not cause corrosion of the material to which it is applied. Paint containing lead, zinc, copper, or tin shall not be used. Chloride free paint shall be used for austenitic, duplex, and super duplex stainless-steel pipework.

## 10 Welding of stainless-steel materials requirements

### 10.1 General

General cleanliness and the absence of contamination are important for attaining good weld quality. Oils or other hydrocarbons, dirt and other debris, strippable plastic film, and wax crayon marks shall be removed to avoid their decomposition and the risk of carbon pickup and weld surface contamination.

The weld shall be free from zinc, including that arising from galvanized products, and from copper and its alloys (care needs to be taken when copper backing bars are used; a groove should be provided in the bar immediately adjacent to the fusion area.)

It is important in stainless steel to reduce sites at which crevice corrosion may initiate. Welding deficiencies such as undercut, lack of penetration, weld spatter, slag, and arc strikes are all potential sites and shall thus be minimised to avoid corrosion. Arc strikes or arcing at loose connections also damage the passive layer and possibly give rise to crevice corrosion, thereby ruining the appearance of a fabrication.

Where the weld appearance is important, the Designer shall specify the as-welded profile and surface condition required. This may influence the welding process selected or the post-weld treatment. Consideration shall also be given to the location of the weld and whether it is possible to apply the appropriate post-weld treatment.

### 10.2 Welding consumables

Welding consumables shall comply with the requirements of AS/NZS 1554.6 and AS/NZS 3992.

Welding consumables shall be compatible with the parent metal and shall be classified and identified in accordance with the provisions of AS/NZS 1167.2 and/or AS/NZS 4854 to AS/NZS 4857 inclusive.

Welding Consumables shall be kept free from contaminants and stored according to the manufacturer's instructions. Any process that uses a flux (for example, MMAW, FCAW, SAW) is susceptible to moisture pick-up from humid air, which can lead to porosity in the weld. Some processes, such as GTAW (TIG) or laser welding, may not use filler metals.

## 10.3 Structural welding

Guidance for selecting the weld category for a given application can be found in Appendix B of AS 1554.6. The category of the sub-surface weld specifies weld quality, the class of the surface weld, and the grade of the surface finish. A summary of these classifications can be found in Table 2. Each weld must be specified using these criteria by the Designer.

Where not specified, all structural welds shall be 2BII at a minimum. Pressure pipe welds in accordance with AS 4041 shall be completed as per Class 2P for pipe.

Table 2: Weld category requirements for stainless steel structures (AS1554.6)

Internal Category	Requirements/s
1	Structural and load-bearing joints where the weld is subject to moderate dynamic loading.
2	Structural integrity is not paramount.
F	High levels of dynamic loading.
Surface Class	
A	Highest level of surface quality. Required for severe fatigue loading.
B	Required for most corrosion applications. It is also suitable for decorative handrails.
C	Provided for non-critical surfaces where there is no contact with corrosive media.
Surface Finish Grade	
I	Polished, typically for decorative purposes.
II	Cleaned, provides the best possible corrosion resistance for a welded joint. Removal of dark weld oxide promotes the formation of protective chromium oxide.
III	As welded. Provided for non-critical surfaces with no exposure to corrosive media.

## 10.4 Welding distortion

Welding distortion is greater in austenitic stainless steel than in ferritic steel because of higher coefficients of thermal expansion and lower thermal conductivities. Heat input and interpass temperatures need to be controlled to minimize distortion and to avoid potential metallurgical problems.

Welding distortion shall be controlled by taking the following measures:

1. Designer Considerations
  - a. Remove the necessity to weld wherever possible. This could be achieved through the specification of hot rolled sections, hollow sections, or laser-fused sections (laser-fusing results in less distortion).
  - b. Reduce the extent of welding.
  - c. Reduce the cross-section of welds. For instance, in thick sections, specify double V, U, or double U preparations, in preference to single V preparations.
  - d. Use symmetrical joints.
  - e. Design to accommodate larger dimensional tolerances.

## 2. Fabricator Considerations

- a. Use efficient clamping jigs. If possible, the jig shall incorporate copper or aluminium bars to help conduct heat away from the weld area.
- b. When efficient jiggling is not possible, use closely spaced tack welds laid in a balanced sequence.
- c. Ensure that good fit up and alignment is obtained prior to welding.
- d. Use the lowest heat input commensurate with the selected weld process, material, and thickness.
- e. Use balanced welding and appropriate sequences (for example, backstepping and block sequences).

## 10.5 Weld maps

The Fabricator shall provide a weld map outlining the welding undertaken in the fabrication of the stainless-steel components. The weld map shall outline the following:

1. WPS number used for the welding undertaken.
2. Welder's initials or welding number for each weld undertaken.
3. Welding supervisor's initials or welding number for each weld inspected.

The weld map shall be submitted to the Superintendent for approval after all welding has been completed. Refer to Appendix D3.

## 10.6 Post-weld treatment and cleaning

Post-weld heat treatment of stainless-steel welds shall not be undertaken outside a producing mill environment. In certain circumstances, a stress relief heat treatment may be required, however, any heat treatment may involve risk, and specialist advice should be sought.

Post-weld finishing is generally necessary, as below, especially if arc welding processes are involved.

All traces of heat tint shall be removed. It may be removed by pickling, electropolishing, or glass bead blasting, with the first 2 options being preferred.

Peening the surface of a weld is a beneficial post-weld treatment as it introduces compressive stresses into the surface, which improves fatigue and stress corrosion cracking resistance and aesthetic appearances. Peening shall not be used to justify a change in fatigue assessment.

The action of removing metal during substantial machining gives rise to stress relieving and, hence, distortion of the as-welded product. In cases where the distortion is such that dimensional tolerances cannot be achieved, thermal stress relief may be required.

### 10.6.1 Grinding and finishing

Grinding/sanding was conducted to remove all weld defects, excessive reinforcement, weld spatter, sharp edges, arc strikes, and gouges. When grinding, care must be taken, and all grinding shall comply with the requirements AS/NZS 1554.6 in paragraph 5.16.3, which are:

1. Grinding shall not overheat the metal as heavy pressure or too rapid removal of metal may lead to heat tint.
2. The area ground shall blend smoothly into the surrounding surface without abrupt changes in contour.
3. The grinding shall not extend below the surface of the parent material by more than 0.5 mm for material less than 10 mm thick.

4. Grinding wheels shall be dedicated for stainless steel work only. Ceramic bonded sulphur-free grinding wheels are recommended. Where resin-bonded grinding wheels are used, care should be taken to prevent smearing of resin on the material surface.
5. Grinding shall mechanically polished surfaces to at least a 320-grit finish.

If the expected surface roughness of the stainless-steel structure is less than 0.5 microns, then finishing is not required for reducing corrosion risk, however, if a roughness profile of approximately 0.2 microns or less is required, this process should occur.

### 10.6.2 Electropolishing

Electropolishing can be carried out manually or in a bath. The manual process offers greater flexibility and can be carried out on-site if needed. A mild electrolytic cleaning fluid is applied to the surface of the weld by using a conductive weld cleaning brush. Electric current (AC/DC) is employed so that desired cleaning and passivation results are accomplished. In the bath process, the stainless-steel element is submerged in an acid bath (acetic acid/phosphoric acid). Often, the size of the tub limits the volume of stainless steel that can be electropolished at any one time and requires that these structures be fabricated in small pieces.

### 10.6.3 Blasting

Blasting with non-metallic abrasive can be used to remove heat tint surface oxides and iron contamination from the stainless-steel surface. Critically, the blasting medium must be completely free of iron contaminants; otherwise, these will become embedded within the surface and decrease corrosion resistance.

Glass bead blasting may be used on surfaces that are too large to finish by traditional electropolishing to create a desired surface finish. Coarse and angular grit shall not be used as this would lead to a high surface roughness.

### 10.6.4 Pickling and passivation of stainless-steel welds

Oxide scales are formed on the surfaces of stainless steels during annealing, hot-forming, and welding. Oxide scales deplete the chromium near the surface of the material, which sensitises the material, making it susceptible to corrosion. For butt welds, this scale (also referred to as heat tint) forms on both the external welded surface and the internal welded surface. For external fillet welds it also occurs on the opposite side of the welded surface. For example, an external fillet weld to attach a lifting lug, bracket, or puddle flange to a pipe will produce heat tint on the inside surface of the pipe. This will result in internal corrosion for a pipe conveying internal liquid and must be avoided.

Figure 2 below displays different levels of heat tint due to increasing amounts of oxygen contamination during welding. These oxygen concentrations vary between 10ppm (Sample 1) to 25,000ppm (Sample 10), and the discolouration is indicative of the amount of heat tint that occurs on the inside of a pipe when it is welded on the outside. This shows that descaling/pickling must appear on both sides of the weld to ensure corrosion resistance.

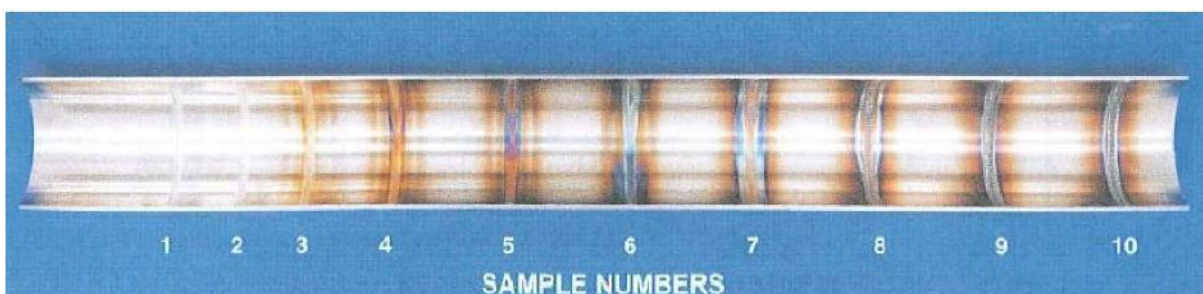


Figure 2: Weld discolouration levels inside 316L stainless steel (AS 1554.6)

#### 10.6.4.1 Post-weld treatment of heat tint in stainless-steel welds

Pickling and passivation requirements for stainless steel welds are to be included in the Notes sections of the WPS.

After this treatment, both the weld side and the reverse side must be free of any heat tint – except as indicated below for the inside of a pipe weld. The welding procedure must use the specified shielding gas and then pickle the weld capping bead and adjacent heat-affected areas following the procedure in the following Pickling section. After chemical pickling, no heat tint should be visible.

Alternatively, the weld heat tint may be mechanically removed, and any weld crevices associated with the capping pass. If using abrasive belts, the final surface roughness must not exceed  $0.5\mu\text{m } R_a$  – typically achieved with a final polish by 320-grit abrasive. However, a used 240-grit abrasive may also achieve this surface roughness. The abraded area should then be passivated with nitric acid paste unless pickled and therefore passivated as a by-product of treatment to the root weld.

If the root weld is the underside of a plate or interior of a vessel and the root weld is accessible after welding, then use the same procedure as used to clean and passivate the root weld bead and heat tinted surrounds as was used for the capping run and surrounds.

If the weld is in a pipe, then the interior must be purged with inert gas prior to welding until the monitored exit gas has less than 50 ppm oxygen. Suppose a sensitive oxygen meter is not available. In that case, then a gentle purge with inert gas for at least 10 times the interior volume is required, with the vent location chosen to consider the purge gas density relative to air. This should provide a heat tint less than pale straw (Level 3 in Figure 2). Small additions of hydrogen in the purge gas may be used to reduce the severity of any heat tint in austenitic pipe welds. The lower the oxygen content, the fainter the colour, and the better the corrosion resistance. Purging should continue until the metal temperature is below  $\sim 250^\circ\text{C}$ . If the internal heat tint exceeds pale straw, the interior must be pickled using pickling paste (for large diameter pipe) or by immersion in a pickling bath if interior access is not possible (where the pipe will not be Cement Mortar Lined).

#### 10.6.4.2 Pickling to remove heat tint and passivate the welded area

Prior to chemical treatments such as pickling or passivation, all weld spatter/arc strikes/silica build-up and other surface defects shall be removed by stainless steel flap disc grit grade 240 or finer, power brushing, and manual brushing using stainless steel wire brushes.

If the heat tint inside a pipe is no more than pale straw (Level 3 in Figure 2), then provided the base material away from the weld has adequate corrosion resistance for the service, no further treatment is required. However, if the surface has been abraded during fabrication, an additional passivation treatment may be required.

ASTM A380 provides details of the pickling chemicals and a series of recommended combinations of concentration, time, and temperature for pickling baths used off-site (Refer to Table 3). The conditions depend on the severity of the heat tint and the specific alloy (i.e., worse heat tint requires more pickling, and more corrosion-resistant alloys require pickling for longer or at higher temperatures). At the end of a pickling treatment, the corrosion resistance will be comparable to that of a 2B mill finish.

Over-pickling must be avoided, and therefore, continuous exposure times indicated in ASTM A380 shall be followed.

Pickling gels/paste contain the hazardous chemical hydrofluoric acid. Before commencing pickling operations, an SDS of the pickling gel shall be obtained and reviewed, and a Job Safety Analysis will be performed. Any instructions for safe use and disposal included in the SDS must be followed.

Table 3: Acid pickling of stainless steel (ASTM A380, 2006)

Alloy	Condition	Code	Solution, Volume %	Temperature (°C)	Time (minutes)
200, 300, and 400 Series, precipitation-hardening, and maraging alloys (except free-machining alloys)	fully annealed only	A	H <sub>2</sub> SO <sub>4</sub> , 8–11 % Followed by treatment D or F (Table 4)	66–82	5–45
200 and 300 Series; 400 Series containing Cr 16% or more; precipitation-hardening alloys (except free-machining alloys)	fully annealed only	B	HNO <sub>3</sub> , 15–25 % plus HF, 1–8 %	21–60	5–30
All free-machining alloys and 400 Series containing less than Cr 16 %	fully annealed only	C	HNO <sub>3</sub> , 10–15 % plus HF, ½–1½%	21, up to 60 (with caution)	5–30
200 and 300 Series, 400 Series containing Cr 16 % or more, and precipitation-hardening alloys (except free-machining alloys).	fully annealed only	D <sup>2</sup>	HNO <sub>3</sub> , 6–25 % plus HF, 1 / 2 to 8%	21–60	As necessary
Free-machining alloys, maraging alloys, and 400 Series containing less than Cr 16 %.	fully annealed only	E2	HNO <sub>3</sub> , 10 % plus HF, 1 / 2 to 1 1 / 2%	21, up to 60 (with caution)	1-2

Passivation is the process of increasing the chromium-to-iron ratio within the protective passive film and cleaning the surface of contaminants to accelerate the formation of the protective chromium oxide film under the correct conditions. This is often completed after pickling to restore the surface finish.

This process involves a bath of nitric acid at the required concentration, time, and temperature as described in ASTM A380 Table A2.1 Part II (recreated as Table 4 below). This table details the cleaning procedures for contamination and corrosion products formed during handling and fabrication. Passivation does not remove grease and oils from the surface, and as such, appropriate cleaning must be completed prior to passivation.

### 10.6.4.3 Additional passivation

If higher corrosion resistance is required than provided by the base material, then further passivation treatments using nitric acid are described in ASTM A967. This treatment will not change the appearance of the surface. Alternatively, the component can be electropolished in a factory bath. Both processes increase the chromium-to-iron ratio and, therefore, improve corrosion resistance. Electropolishing also removes sharp edges and consequently increases the brightness of the surface.

<sup>2</sup>Acid pickling treatments codes D and E are only for use after descaling or mechanical cleaning of scale or smut to produce a uniform white pickled finish.

Confirmation of successful pickling and consequent passivation shall be by visual inspection of both sides of all butt and fillet welds performed by a qualified welding supervisor or welding inspector to ensure the removal of heat tint has been achieved. Site welds can be particularly problematic, and careful consideration should be given to ensure that the inside and outside of site welds can be reached to allow inspection and pickling paste application.

Table 4: Cleaning passivation with nitric acid (ASTM A380, 2006)

Alloys	Condition	Code	Solution, (Volume %)	Temperature (°C)	Time (minutes)
200, 300, 400, precipitation hardening, margining alloys containing 16% Cr or more. Exclude free machining alloys.	Annealed, cold-rolled, thermally hardened, work hardened with dull or non-reflective surfaces.	F	HNO <sub>3</sub> 20-50%	49-71	10-30
				21-38	30-60
	Annealed, cold-rolled, thermally hardened, work hardened with a bright machined or polished surface.	G	HNO <sub>3</sub> 20-50% Plus Na <sub>2</sub> Cr <sub>2</sub> O <sub>7</sub> ·2H <sub>2</sub> O 2-6 wt.%	49-69	10-30
				21-38	30-60
400, precipitation hardening, margining alloys containing 16% Cr or less, high carbon straight Cr alloys. Exclude free machining alloys.	Annealed or hardened with dull or non-reflective surfaces	H	HNO <sub>3</sub> , 20–50 %	43-54	20-30
				21-38	60
	Annealed or hardened with bright machined or polished surfaces	I	HNO <sub>3</sub> 20–25 % plus Na <sub>2</sub> Cr <sub>2</sub> O <sub>7</sub> ·2H <sub>2</sub> O, 2–6 wt.%	49–54	15–30
				21–38	30–60
200,300,400 Series free machining alloys	Annealed or hardened, with bright-machined or polished surfaces	J	HNO <sub>3</sub> , 20–50 % plus Na <sub>2</sub> Cr <sub>2</sub> O <sub>7</sub> ·2H <sub>2</sub> O, 2–6 wt.%	21–49	25–40
		K	HNO <sub>3</sub> , 1–2 % plus Na <sub>2</sub> Cr <sub>2</sub> O <sub>7</sub> ·2H <sub>2</sub> O, 1–5, wt.%	49–60	10
		L	HNO <sub>3</sub> , 12 % plus CuSO <sub>4</sub> ·5H <sub>2</sub> O, 4 wt.%	49–60	10
Special free-machining 400 Series alloys with more than Mn 1.25% or more than S 0.40%	Annealed or hardened with bright-machined or polished surfaces	M	HNO <sub>3</sub> , 40–60 % plus Na <sub>2</sub> Cr <sub>2</sub> O <sub>7</sub> ·2H <sub>2</sub> O, 2–6 wt.%	49–71	20–30

# 11 Welding of aluminium materials requirements

## 11.1 General

All welding shall conform to the requirements of this standard, AS/NZS 1665, and other relevant standards and codes unless specified otherwise.

All fabricated products that involve welding of aluminium and purchased directly from a Supplier or Manufacturer shall comply with the requirements presented in Section 12.2.

## 11.2 Welding Consumables

Welding electrodes shall be compatible with the parent metal and shall be classified and identified in accordance with the provisions of AS/NZS ISO 18273.

Welding consumables must conform to AS/NZS ISO 18273 for rods or AS/NZS 1865 for continuous wire. Testing of welding consumables must comply with AS/NZS 1665.

The Fabricator shall supply to the Constructor copies of certifications from a recognised authority complying with the requirements of AS/NZS 1665, confirming that the classification and grade of the welding consumables are suitable for welding the aluminium type nominated in the welding procedures.

## 11.3 Welding Personnel

The role and qualifications of welding personnel shall be as specified in Section 7.

All welders shall satisfy conditions A and B of Clause 4.5.3 of AS/NZS 1665. All welders must demonstrate their competence by welding a test piece qualified by testing in accordance with AS/NZS 1665 Clause 4.5.3.

Any welder who during fabrication, repeatedly produces nonconforming welds must be required to be re-tested. Failure of the re-test must preclude such welder from further similar welding on the project scope of works until the welder develops the required proven ability to produce sound welds.

## 11.4 Inspection of Completed Product

Inspection of all completed welding shall be in accordance with the requirements of AS/NZS 1665 and Appendix B of this standard.

When a non-conforming weld is detected following inspection, the weld areas shall be repaired and re-tested in accordance with AS/NZS 1665 and Appendix B of this standard.

## 12 Additional construction considerations

In addition to the foregoing, both the constructor and fabricator must comply with the construction requirements of this section.

### 12.1 Lifting plans

To avoid overloading at pipe connections/joints (including gaskets), the Constructor (including any subcontractors) and the Fabricator shall have lifting plans developed and included in ITP's when handling pipe specials with valves. Lifting plans and ITPs are to be sent to the SA Water Representative for review and comment prior to the lifting of pipe specials with valves attached.

These requirements represent a **HOLD POINT** under this Technical Standard.

Handling of stainless steels shall be in accordance with TS 0730.

### 12.2 Purchase of fabricated products

For fabricated products purchased directly from a Supplier or Manufacturer which are to be used in SA Water infrastructure, the Constructor must:

1. Obtain a Manufacturers Data Report (MDR).
2. Have the MDR reviewed by a suitably experienced person (who is independent of the Supplier/Manufacturer) to confirm the product complies with TS 0420 and applicable Australian or International Standards (s). A Compliance Statement Report (CSR) shall be provided to SA Water.
3. Provide the SA Water Representative with the MDR and a compliance statement that confirms the product satisfies the requirements of TS 0420 and applicable Australian and/or International Standards. A copy of the test certificates or Supplier Declaration of Conformity (SDoC) shall be maintained with the purchasing information, and a copy provided to the SA Water Representative for all purchased components.
4. Where the compliance review identifies non-conformances, the Constructor shall either:
  - a. Source an alternative product that complies.
  - b. Have the Supplier or Manufacturer rectify the non-conformances, providing evidence and confirmation that this has been suitably completed in the compliance statement.

The requirements of section 11.2 represent a **HOLD POINT** under this Technical Standard and must be released **before** the product is procured for use in SA Water's network.

Products listed in SA Water's Approved Products Technical Standards (TS 0502 to TS 0507), which are to be installed on non-critical infrastructure (refer to TS 0109), are exempted from the requirements of this section.

## 13 Approved fabricators

An Approved Fabricator is exempted from the project-by-project submission requirements of section 4 of this Technical Standard but is still expected to comply with the other provisions of this standard as applicable.

Fabricators not listed in Table 5 may still be used but are required to comply with the project-by-project submission requirements of section 4.

The process of becoming an Approved Fabricator occurs at SA Water's sole discretion and requires a Fabricator to satisfy all of the following conditions:

1. Demonstrates sustained compliance to section 4 of this Technical Standard.
2. Completes a significant number of projects over a 12-month period.
3. The Fabricator has had no non-compliances and/or examples of uncontrolled welding operations occur on SA Water works within the 12-month period under consideration.
4. The Fabricator's welding management system is confirmed by an SA Water audit to be compliant with the requirements of TS 0420:
  - a. This requires any corrective actions identified by the audit to be resolved within 30 business days

SA Water's discretion to approve a Fabricator will consider matters including, but not limited to:

- Prevailing market conditions, including need, competition, and availability of Fabricators.
- The performance of existing Approved Fabricators.
- Budget available to undertake an audit.

Approved Fabricators are provided in Table 5 below.

Upon successfully becoming an Approved Fabricator, the following documentation will be provided by SA Water:

- a. An approval letter (a sample is provided in Appendix E)
  - This letter provides details of conditions and ongoing requirements an Approved Fabricator is expected to comply with, as well as consequences should this not occur.
- b. Hard copies of approved weld procedures
  - These can be identified by the presence of an SA Water approval stamp (shown in Figure 3 below), which contains a date and signature.

These documents shall be produced upon request and are to be included in MDR documentation as required by other sections of this Technical Standard to support monitoring and quality assurance activities.

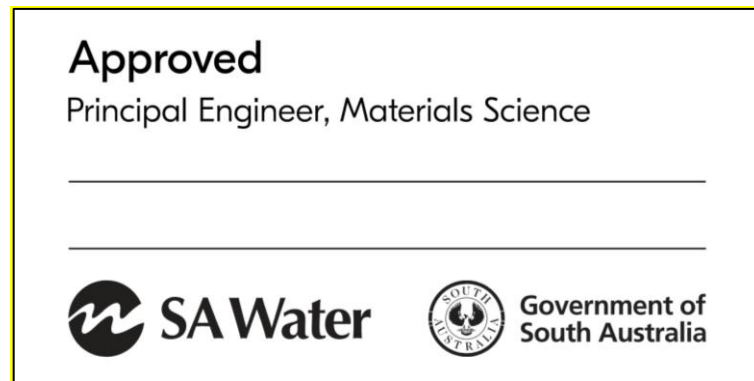


Figure 3: SA Water approval stamp

Table 5: SA Water approved fabricators

Approved fabricators (to SA Water TS 0420)
DMK Engineering – Mount Gambier
F Miller & Co.
JMA Engineering
Reimann Manufacturing

## A Schedules of hold points, witness points and identified records

### A1 Schedule of hold points and witness points

Section	Type	Description
4	Hold	Submission of documents for review prior to commencing work
5.2	Hold	AS/NZS ISO 9001 Certification
7.2.1.2	Witness	Independent Welding Inspector
9	Review	Welding inspection and NDT testing reports
9.8	Hold	Where unsatisfactory welds are produced by a welding operator, the Constructor and/or its Sub-Contractor will notify SA Water's Representative as soon as a discovery of unsatisfactory welds is made (i.e., within two (2) days or before further works)
12.1	Hold	Lifting Plan
12.2	Hold	Compliance Statement Report or SDoC and MDR when purchasing fabricated products.

### A2 Schedule of identified records

Section	Description of Identified Record
4	Records submitted prior to commencement of work
5	Manufacturers Data Report (MDR)
5.4	Quality Plan
5.6	Completed ITPs
5.8	Permits (as applicable)
8	Welding Inspector Report – Visual inspection of completed welds
8	NDT Contractor – Non-Destructive testing report
9.5	Pressure test records
9.7	Welder Performance Monitoring
9.8	Weld traceability records
10.4	Weld Map

**B** NDT and inspection requirements

Australian Standard	Clause	Weld Joint Type	Structure Class	Standard Inspection and Testing Regime Requirements <sup>(1,2)</sup>	Increased Inspection and Testing Regime Requirements <sup>(1,3)</sup>
<b>AS 4037D</b> <b>6</b>	AS 4037 Table 7.3 B	Fillet	Class 2P steel	Visual 100% 0% MPI <sup>(4)</sup>	Supervisor 100% scan Inspector 100% Visually Inspected 100% MPI first 5 welds 10% MPI remaining welds
	AS 4037 Table 7.3 B	Butt	Class 2P steel	Visual 100% 5% RT T<10 RT 5% T>10 RT/UT + MPI 5% <sup>(4)</sup>	Supervisor 100% scan Inspector 100% Visually Inspected 100% NDE (RT for <10mm and UT plus MPI for ≥10mm) for the first 5 welds 10% RT remaining welds
	AS 4037 Table 7.3 A	Longitudinal Butt	Class 2P steel	Visual 100% RT 10% (<10mm) RT/UT 10% + MPI (10-32mm)	Supervisor 100% scan Inspector 100% Visually Inspected 10% RT if <10mm or 10% UT if ≥10mm: Plus 10% MPI
	AS 4037 Table 7.3 C	Circumferential corner / Butt, Joint type C1	Class 2P steel	Visual 100% T<10 RT 5% T>10 RT/UT + MPI 5% <sup>4</sup>	NA
	AS 4037 Table 7.3 C	Circumferential Butt and fillet, Joint type C2-5	Class 2P steel	Visual 100% 5% RT T<20mm MPI/DPI 0% T 20-32mm MPI/DPI 5% <sup>4</sup>	NA
	AS 4037 Table 7.3 D	Branch Joint Type D1-6	Class 2P steel	Visual 100% Throat < 15mm MPI/DPI 0% Throat >15mm MPI/DPI 5%	Supervisor 100% scan Inspector 100% Visually Inspected 100% MPI – branch / pipe <sup>(5)</sup> No NDE – pipe / branch / comp plate 100% MPI – branch / comp plate fillet

Australian Standard	Clause	Weld Joint Type	Structure Class	Standard Inspection and Testing Regime Requirements <sup>(1,2)</sup>	Increased Inspection and Testing Regime Requirements <sup>(1,3)</sup>
	AS 4041 Table 1.5	Emergency Repair Patch <sup>(6)</sup> Regional	Class 3	Visual 100% MPI or DPI 0% RT or UE 0%	NA
AS 4041	AS 4037 Table 7.3 B	Fillet	Class 2 piping Group K – 316	Visual 100% MPI or DPI 0% RT or UE 0% Note 22 – Shock 100% RT/UT +MPI/DPI	Supervisor 100% scan Inspector 100% scan and 20% Visually Inspected 10% DPI
	AS 4037 Table 7.3 B	Butt	Class 2 piping Group K – 316	5% RT T<10 RT 5% T>10 RT/UT + MPI 5% <sup>4</sup>	Supervisor 100% scan Inspector 100% scan and 20% Visually Inspected 10% RT (10% DPI if there is RT test restrictions)
	AS 4037 Table 7.3 A	Longitudinal Butt	Class 2 piping Group K – 316	Visual 100% RT 10% (<10mm) RT/UT 10% + MT (10-32mm) <sup>(4)</sup>	Supervisor 100% scan Inspector 100% scan and 20% Visually Inspected 10% RT
	AS 4037 Table 7.3 D	Branch Joint Type D1-6	Class 2 piping Group K – 316	Visual 100% RT 10% (<10mm) RT/UT 10% + MPI (10-32mm) <sup>(4)</sup>	Supervisor 100% scan Inspector 100% scan and 20% Visually Inspected 100% DPI – branch / pipe <sup>(5)</sup> No NDE – pipe / branch / comp plate 100% DPI – branch / comp plate fillet
AS/NZS 1554.1	AS 1554.1 Table 7.4	Fillet	Class SP Structural Steel	Visual Scanning 100% Visual examination 0 to 50% MPI/DPI 0 to 10%	Supervisor 100% scan Inspector scan and 50% Visually Inspected 10% MPI
	AS 1554.1 Table 7.4	Butt	Class SP Structural Steel	Visual Scanning 100% Visual examination 0 to 50% MPI/DPI 0 to 10% RT/UT 0 to 10%	Supervisor 100% scan Inspector scan and 50% Visually Inspected 10% RT if <10mm or 10% UT if ≥10mm (10% MPI if there is RT/UT test restrictions)

Australian Standard	Clause	Weld Joint Type	Structure Class	Standard Inspection and Testing Regime Requirements <sup>(1,2)</sup>	Increased Inspection and Testing Regime Requirements <sup>(1,3)</sup>
	AS 1554.1 Table 7.4	Fillet / Butt	Class GP	Visual Scanning 100% Visual examination 5 to 25% MPI/DPI 0 to 2% RT/UT Nil	Not covered in TS 0420
AS/NZS 1554.6	AS1554.6 Table 7.4	Fillet	Class 2B Stainless steel	Visual Scanning 100% Visual examination 10 to 50% DPI 0 to 5%	Supervisor 100% scan Inspector 100% scan and 20% Visually Inspected 10% DPI
	AS1554.6 Table 7.4	Butt	Class 2B Stainless steel	Visual Scanning 100% Visual examination 10 to 50% DPI 0 to 5% RT 0%	Supervisor 100% scan Inspector 100% scan and 20% Visually Inspected 10% RT (10% DPI if there is RT test restrictions)
AS/NZS 1665	AS 1665 Clause 7.4 and Appendix B Table B1	Fillet	Class B Aluminium	CF1 – Cat B Visual Examination and 2 to 5% RT or UT CF2 – Visual examination CF3 – Visual examination	Supervisor 100% scan Inspector 100% scan and 50% Visually Inspected 10% DPI
	AS 1665 Clause 7.4 and Appendix B Table B1	Butt	Class B Aluminium	CF1 – Cat B Visual examination and 2 to 5% RT or UT CF2 – Visual examination CF3 – Visual examination	Supervisor 100% scan Inspector 100% scan and 50% Visually Inspected 10% RT or UT (10% DPI if there is RT test restrictions)
AS/NZS 1554.3	AS 1554.3\Clause 6.2 and 7	Butt	Reinforcing	Type and extent to be specified	Supervisor 100% scan Inspector 100% scan and 50% Visually Inspected 100% MPI for the first 5 welds <sup>(7)</sup> 10% MPI remaining welds
	AS 1554.3 Clause 6.2 and 7	Splice			Supervisor 100% scan Inspector 100% scan and 50% Visually Inspected 100% MPI for the first 5 welds <sup>(7)</sup> 10% MPI remaining welds

**Notes:**

1. Refer section 8.1

2. Standard Inspection and Testing Regime is based on SA Water's interpretation and application of relevant Australian Standards to its infrastructure.
3. For tying into Existing Piping refer to section 8.6 for additional requirements.
4. According to Note 22 of AS 4037 Table 7.3, for welds where the fluid is lethal or where the piping is subject to severe shock, welds shall be 100% RT/UT +MPI/DPI. Refer to TS 0850 for SA Water Chemical Dosing equipment.
5. NDE of the branch FSBW's shall occur prior to fitment of compensation plates, wrapper plates or crotch plates if specified in the design. Compensation plate fillet welds shall be 100% DPI inspected. No NDE -of the compensation plate butt weld is required.
6. Refer to section 8.8 for patching plates details.
7. If a weld fails inspection the next 5 welds are to be tested as indicated for the first 5 welds.

## C Weld review process

The weld review process is mapped below to provide detail regarding the stages throughout, and what occurs in each stage. This is also represented diagrammatically in the flowchart below to highlight the interactions between the stages relative to the outcome.

Step	Step description	Responsibility
1	<p><b>Weld Information Collated</b></p> <p>Weld information supplied by the Contractor, for review as part of TS 0420 section 3 (all documents must be submitted), to be collated by the SA Water Project Manager before submission.</p> <p>The SA Water Project Manager may delegate this step to others by agreement, and weld procedure review correspondence will be directed to them. However, overall responsibility remains with the Project Manager.</p>	SA Water Project Manager
2	<p><b>Weld Documentation submitted via Request for Engineering Engagement (RFEE) system.</b></p> <p>The weld procedure review request is to be submitted via the RFEE system. Details of this form are provided below for reference.</p> <p>Weld procedure reviews will only to be actioned if received as a RFEE, and after steps 3 – 5 have been completed.</p> <p>Please note:</p> <ol style="list-style-type: none"> <li>Weld procedures will not proceed without a work order number being provided.</li> <li>Review timeframes specified in TS 0420 commence from the receipt of current and complete information.</li> <li>This review timeframe is reset when information is incomplete.</li> <li>The SA Water Project Manager may delegate this step to others by agreement, and weld procedure review correspondence will be directed to them. However, overall responsibility remains with the Project Manager.</li> </ol>	SA Water Project Manager
3	<p><b>RFEE Assigned</b></p> <p>RFEE assigned to the SA Water Materials Engineer.</p>	SA Water Manager Engineering Quality & Innovation
4	<p><b>Submission Check</b></p> <p>The completeness of the submitted weld procedure review request is undertaken to ensure the applicant has supplied the documents required by TS 0420 section 4.</p> <p>Where any document/s is/are not provided, the RFEE will be rejected (which will create an automated notification), with closing comments provided in the RFEE detailing the issues to be addressed.</p>	SA Water Materials Engineer
5	<p><b>Submission Review</b></p> <p>An initial review of the weld procedure request submission is undertaken to confirm (at a high level) that the documents provided meet the technical requirements of TS 0420 as detailed below:</p> <ol style="list-style-type: none"> <li>The Weld Procedure Specifications (WPS) are provided.</li> <li>The Welder Qualification Record (WQR): initial WQR (valid for 6 months) and continuity reports (extension available for up to 2 years).</li> <li>Nominated Welding Supervisor qualifications.</li> <li>Nominated Welding Inspector qualifications.</li> <li>Inspection Test Plan (ITP) for the works to be undertaken.</li> </ol> <p>Where any document/s does not meet the requirements of TS 0420, the RFEE will be rejected (which will create an automated</p>	SA Water Materials Engineer

Step	Step description	Responsibility
	notification), with closing comments provided in the RFEE detailing the issues to be addressed.	
6	<p><b>Weld Procedure Specification (WPS) Acceptance Check</b></p> <p>A check of the WPS is conducted to determine if submitted documentation has been assessed and accepted previously. If a WPS has not been assessed and accepted previously, a <b>detailed</b> review is conducted.</p>	SA Water Materials Engineer
7	<p><b>Weld Procedure Specification Review</b></p> <p>Where a WPS has not been assessed and accepted previously, a <b>detailed review of WPS is undertaken. This is required before other related documents can be reviewed.</b></p>	SA Water Materials Engineer
8	<p><b>Personnel and ITP Review</b></p> <p>A check of the ITP to ensure it has relevant hold points for the specific project, inspection steps and meets the Non-Destructive Testing (NDT) requirements of TS 0420. A check of Welder Qualification and Supervisor/Inspector to be used is also undertaken.</p>	SA Water Materials Engineer
9 & 10	<p><b>Response Prepared and Issued</b></p> <p>A response letter is prepared, detailing either acceptance or rejection of submitted documentation. <b>Where documentation is rejected, feedback will be provided.</b></p> <p><b>Letter is issued to the SA Water Project Manager for distribution to the contractor and fabricator.</b></p> <p><b>RFEE also closed if compliant to TS 0420.</b></p>	SA Water Materials Engineer
11	<p>Fabricator Documents Updated</p> <p>Where any original submission is rejected, citing corrective actions, updated weld documentation will be required to address these.</p>	SA Water Project Manager
12	<p><b>Documents Resubmitted</b></p> <p>Updated weld documentation prepared in Step 11 is to be resubmitted for review via SA Water’s welding email address at <a href="mailto:welding@sawater.com.au">welding@sawater.com.au</a></p> <p>Please note:</p> <p>a) This review will commence upon receipt of <u>all documents</u> for which corrections have been identified in Step 11.</p> <p>The SA Water Project Manager may delegate this step <b>as detailed in Step 2.</b></p>	SA Water Project Manager
6	<p>Weld Procedure Specification (WPS) Acceptance Check</p> <p>A check of the WPS is conducted to determine if submitted documentation has been assessed and accepted previously. If a WPS has not been assessed and accepted previously, a <b>detailed</b> review is conducted.</p>	SA Water Materials Engineer

## C1 Request for engineering engagement

The RFEE form required for weld procedure reviews is provided below for reference, and is available on the Engineering [RIVER intranet site at Engineering – AquaNet \(sawater.sa.gov.au\)](#).

# Request for Engineering Engagement

Is this request for capital work? \*

Yes

Select 'No' if you are entering a request for - Safety in Design, Quality and Innovation

Engagement Types for Capital \*

Weld Review

Capital Contract Type \*

Portfolio Allocation \*

Please Select

Required Documents for Weld Reviews \*

- PQR
  NDT
  ITP
  WPS
  Material Certificate
  Weld Procedure Document
  Mechanical Test Results
  Weld Qualification Record
  Weld Supervisor Qualifications

Insight Output ID No. \*

eg AXXXX - XXXX

Title \*

Max 50 Characters

RFEE Created By

Business Unit \*

Business Unit - Other

Work Order Number \* 

WO should start with IN, IA, BD, EN or just numbers for Ops

Project/Program Number \*

Should start with C or G

Asset Type \*

Deliverables Required list (System)

System location

Engineering Disciplines/Specialist Required \*

- Electrical  Material Science  Treatment expertise  Energy Generation  Safety in Design  Drone Services
- ROV Services  Laser Scanning  Other  Civil  Structural  Dams  Geotechnical  Mechanical
- Hydraulic  3D / VR / AR  Sustainability by Design

Engineering Disciplines/Specialist Required Other

Please specify if "Other" selected for Engineering Disciplines/Specialist

Background Information

**B I U** | AI v | A v | A v | ¶ v | ¶ v | ≡ v | 🔗 🔗 | — (x) 🔗

Contacts should also be included here e.g. Operations contact, Workshops Contact, etc.

### Deliverable Selection

(Please refer to below images before selecting the Deliverables)

Deliverables Required

**B I U** | AI v | A v | A v | ¶ v | ¶ v | ≡ v | 🔗 🔗 | — (x) 🔗

Clearly outline the deliverables required from this engagement - Concept Design, AS4300 Appendix B Technical Specification, Detailed Design etc.

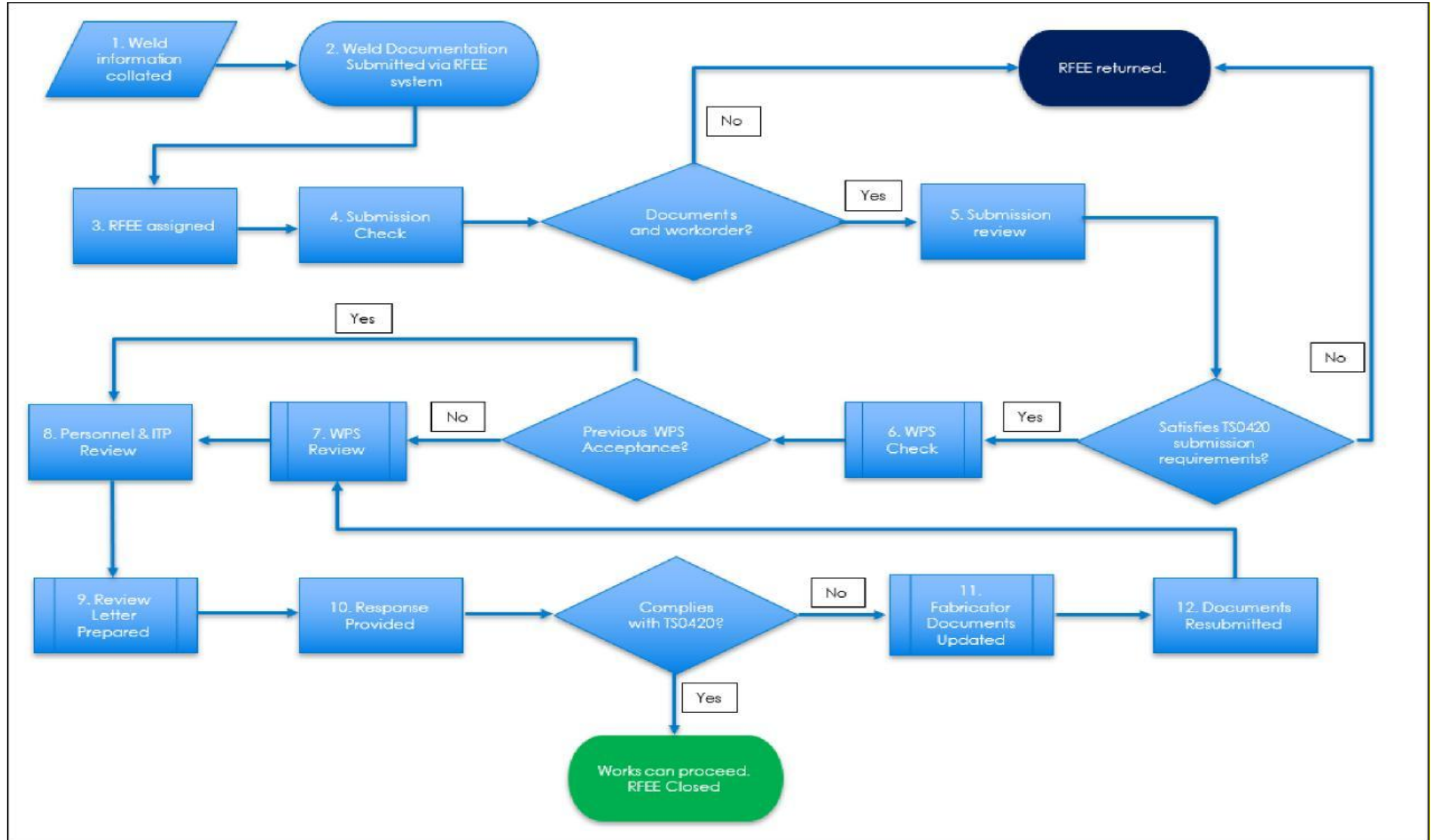
Target Date \*

Date you would like to receive the above deliverables by. Please note this is just a requested date and is not guaranteed.

Attachments

Drag files here or [Select files](#)

## C2 Weld review process



## D Inspection test plans (ITPs) and typical forms

### D1 Inspection test plans

TS 0420 Welding requirements (metals) inspection test plan							Doc ID:	Revision:			
Client: SA Water Contract No:							Prepared By:	Date:			
Project:							Reviewed By:	Date:			
Construction Process:							Approved By:	Date:			
Specifications:											
Structure/Component:											
Item	Inspection/Test Activity	Responsibility	Frequency	Inspection /Test Method	Acceptance Criteria	Record	Contractor	Subcontractor	SA Water	Sign & Date	
<b>1</b>	<b>Preliminaries</b>										
1.1	Design verification, calculations and drawings	Constructor	Pre-Commencement	Issued for Construction drawings	Contract	Drawings	H				
1.2	Constructor to review all documentation of TS 0420	Constructor	Minimum 15 days prior to commencement	Review against TS 0420	In accordance with AS 4458 clause 4.4. Confirm acceptable as per all relevant documentation including: a) Purchase Orders. b) Drawings.	Submission of SA Water	R	S			
1.3	Submission of ITP, welders, supervisors and inspectors for approval	Fabricator – Supervisor	Minimum 15 days prior to commencement	MDR	Documents submitted as per TS 0420 sections 3 and 7	Document submissions	S		H		
1.4	Welding Procedures	Fabricator – Supervisor	Minimum 15 days prior to commencement	Document	As per TS 0420 in accordance with a) AS 4041 clause 5. b) AS/NZS 3992 clauses 2 and 3. c) Detailed design drawings.	Welding procedure Specified and Procedure Qualification Records	R	S			
1.5	Qualified Welding Supervisor	Fabricator – Supervisor	Minimum 15 days prior to commencement	Certificates	TS 0420: Section 6.1	Qualification Certificates	R	S			

1.6	Welding Personnel qualified to procedures	Fabricator - Supervisor	Minimum 15 days prior to commencement	Certificates TS 0420: Section 6	TS 0420: Section 8.8 and in accordance with: a) AS 4041: Clause 5. b) AS/NZS 3992: Clauses 2 and 3. c) AS 4037: Table 8.2, 8.4 Class 2.	Current Qualification records	R	S		
1.7	Welding Supervisor	Constructor	Pre-commencement	Verify	TS 0420: Section 6.1	Certificates	A	S		
1.8	Welding Inspector	Constructor	Pre-commencement	Verify	TS 0420: Section 6.2	Certificates	A			
1.9	Welding NDI Supervisor	Constructor	Pre-commencement	Verify	TS 0420: Section 6.3	NATA Certificates	A			
1.10	Approval submitted welding documentation	SA Water Representative	Pre-commencement	Review	Meets TS 0420 and welding codes minimum requirements	Approval Letter				A
<b>2 Preparation</b>										
2.1	Materials certification and traceability	Welding Supervisor	All materials	Review	TS 0420	Materials certifications and records	W	T		
2.2	Equipment inspection to ensure good working order and consumables correct	Welding Supervisor	Each major item	Visual Inspection	Maintained in accordance with manufacturers recommendations and qualified welding procedures	Inspection and Test Plan	W	T		
2.3	Dimensional Inspection prior to cutting and forming	Welding Supervisor	All items	Visual Inspection AS 4458:1997 – Clause 8	Drg. XXXX-XXXX	Inspection and Test Plan	W	T		
2.4	Inspection of joint fit up and joint preparation	Welding Supervisor	All items	Visual Inspection AS 4458:1997 – Clause 8	In accordance with Approved WPS AS 4458: Clause 8	Inspection and Test Plan	W	T		
<b>3 Fabrication</b>										
3.1	Weld traceability	Welding Supervisor	All items	Review /Visual	TS 0420: Section 9.8	Weld map and weld traceability records	M	S		
	Visual scanning and inspection of	Welding Supervisor	TS 0420: Section 7	Visual	AS 4037 Table 8.4 – Class 2	Highlight all checked welds on				

3.2	welding during fabrication			AS 3978:2003 AS 4037:1999 – Clause 3.2		drawings. Inspection Report / Documentation	M	T		
3.3	Dimensional inspection after fabrication	Welding Supervisor	100%	AS 4458:1997 – Clause 21.2	In accordance with Contract, for construction drawings, any that are not as shown on the drawings are to be marked in red pen and identified as 'As Constructed'	Highlight all checked dimensions on drawings	W	T		
<b>4</b>	<b>Post Fabrication</b>									
4.1	Visual inspection of completed welds	Welding Inspector	100%	AS 3978:2003 AS 4037:1999 – Clause 3.2	TS 0420: Section 7 AS 4037 Table 8.4 – Class 2	Formal Inspection Report	T	R	H	
4.2	Post weld cleaning of stainless-steel inspection	Welding Inspector	100% external and internal	Visual	TS 0420: Section 9	Formal Inspection Report	T	R	H	
4.3	Non-Destructive testing – Magnetic particle test	NDT Contractor	TS 0420: Section 7	AS 1171:1998 – EMY-AC	Magnetic Particle Test AS 4037 Table 8.4 – Class 2	NATA endorsed inspection report	T	R		
4.4	Non-Destructive testing.- Dye penetrant	NDT Contractor	TS 0420: Section 7	AS ISO 3452.6	Aluminium /Stainless steel fillets	NATA endorsed inspection report	T	R		
4.5	Non-Destructive testing – Radiographic	NDT Contractor	TS 0420: Section 7	AS 2177.1:1994 – XR2/S and XR2/DWS	Radiographic test butt welds in accordance with AS 4037 Table 8.2 – Class 2	NATA endorsed inspection report	T	R		
4.6	Non-Destructive testing – Ultrasonic	NDT Contractor	TS 0420: Section 7	AS 2207:2017	Ultrasonic test joint welds in accordance with AS 4037 Table 8.2 – Class 2	NATA endorsed inspection report	T	R		
4.7	Repairs from inspection and NDT	Welding Supervisor	100%	AS 4037:1999 – Clause 9	AS 3788	All recorded documentation and Formal Report	S	W	R	
4.8	Pressure Testing	Constructor's Supervisor	100%	AS 4037:1999 – Clause 17	In accordance with: a) AS 4037: Clause 17. b) TS 0420: Section 8.6 and D5.	TS 0420 A6 Pressure Test Record	W	T	H	
4.9	Pre-delivery surface and	Constructor's Supervisor	100%	AS 4458:1997 – Clause 21.3	In accordance with Contract	Inspection and Test Plan	W	T		

	edge preparation								
4.10	Loading check before transport	Constructor's Supervisor	100%	AS 4458:1997 Clause 21.3	In accordance with Contract	Inspection and Test Plan	W	T	
4.11	Final Inspection	Constructor	100%	Visual Check and Review	In accordance with Contract	Inspection and Test Plan	H	S	
4.12	Prepare Manufacturers Data Report (MDR)	Constructor's Supervisor	100%	TS 0420: Appendix D6	All procedures, drawings, results filed in accordance with Contract Clause	All recorded documentation and ITP	M	T	
4.13	Final Documentation Check	Constructor	100%	Review	In accordance with Contract	All recorded documentation and ITP	H	S	
4.14	Final Documentation Check	SA Water	100%	Review	TS 0420	MDR and ITP			H

**Final Inspection**

The signature below verifies that this ITP has been completed in accordance with the XXXX Quality Systems, Procedures and verifies compliance with Specification.

**Print Name:**

**Position:**

**Signature:**

**Date:**

**Notes:**

**Legend**

Abbreviation	Activity	Description		
H	Hold Point	Work shall not proceed past the HP until released by the SA Water's Representative	SAW	SA Water
W	Witness Point	An inspection which must be witnessed by the SA Water's Representative	Sub	Subcontractor
S	Send	Send documentation for review, verification or approval	Con	Constructor
M	Monitor	Monitor activity in an ongoing basis	Sup	Supervisor
R	Review	Review of product, procedures or documentation	QC	Quality Control
T	Test Point	Product compliance test to be undertaken and recorded/reported	Insp	Inspector
I	Inspect	Inspection to be done and recorded	3rd	Third Party Inspector

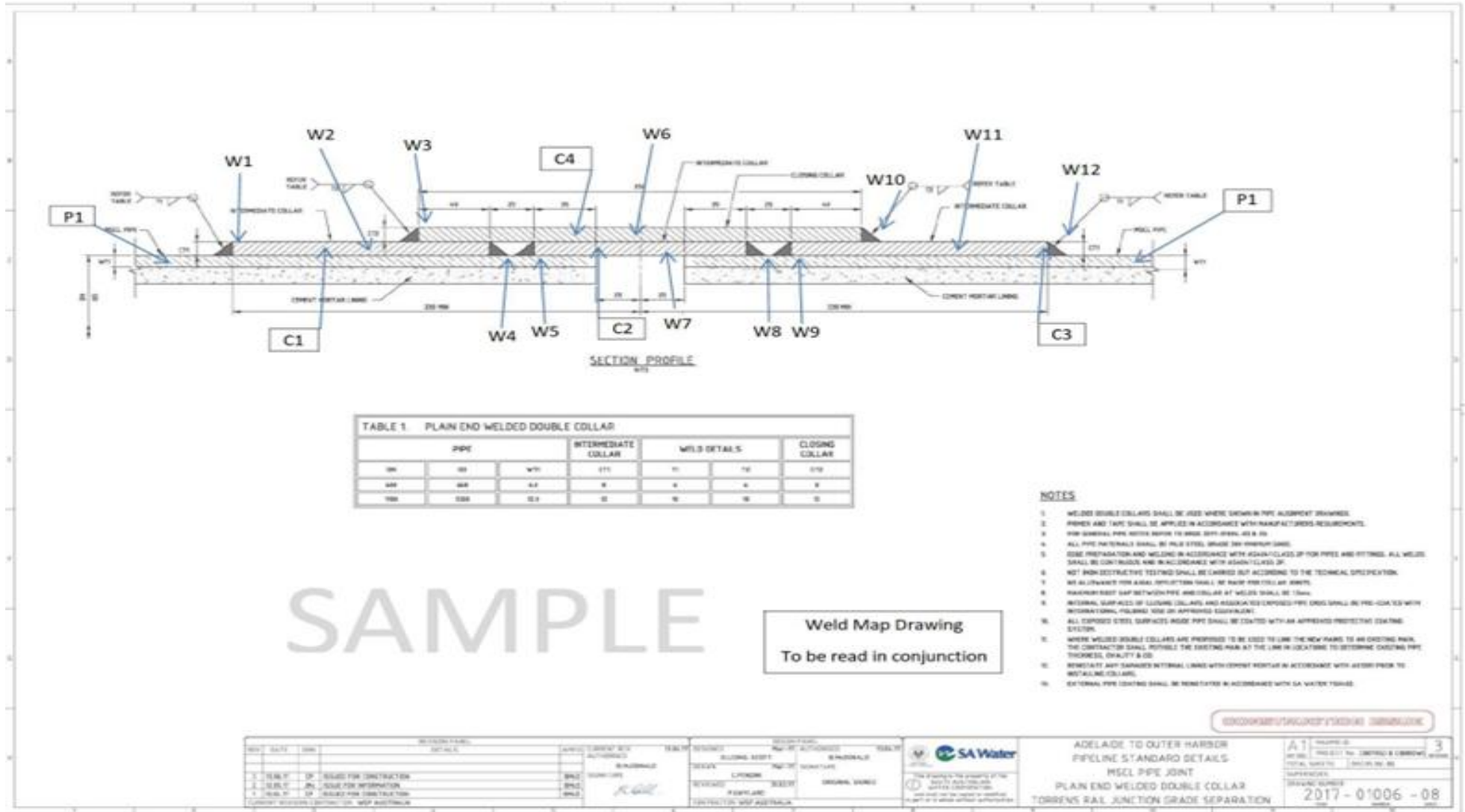
---

<b>A</b>	Approve	<b>PE</b>	Project Engineer
----------	---------	-----------	------------------


## D2 Weld traceability sheet

SA Water		WELD TRACEABILITY SHEET															
Project Details:																	
Drawing No. 2017-01006-08		Weld Traceability Sheet						Welding Service Provider				Inspector					
Spool no.	Material Type	Parts Identify	Dia	Thickness	WPS	WID	Weld No.	Weld Date	Joint Type	Weld Process	Consumable Certs Root/Cap	Supervisor Initials	NDE Report Number	NDE Method	C/DNC	Welding Inspector	Date
600-P1	300 Grd	P1-C1	600	NA	SAW-01	SAW-003	W1	01.06.2017	Fillet	GMAW	201642236	KL	AIS16- 1701	Vis and MPI	C		
600-P1	300 Grd	C1-C1	600	10mm	SAW-01	SAW-003	W2	01.06.2017	SVBW	GMAW	201642236	KL	AIS16- 1702	UT	C		
600-P1	300 Grd	C1-C4	600	NA	SAW-01	SAW-003	W3	01.06.2017	Fillet	GMAW	201642236	KL	AIS16- 1701	MPI	C		
600-P1	300 Grd	P1-C1	600	NA	SAW-01	SAW-003	W4	01.06.2017	Fillet	GMAW	201642236	KL	AIS16- 1701	MPI	C		
600-P1	300 Grd	P1-C2	600	NA	SAW-01	SAW-003	W5	01.06.2017	Fillet	GMAW	201642236	KL	AIS16- 1701	MPI	C		
600-P1- P2	300 Grd	C4-C4	600	10mm	SAW-01	SAW-003	W6	01.06.2017	SBBW	GMAW	201642236	KL	AIS16- 1702	UT	C		
600-P1- P2	300 Grd	C2-C2	600	10mm	SAW-01	SAW-003	W7	01.06.2017	SBBW	GMAW	201642236	KL	AIS16- 1702	UT	C		
600-P2	300 Grd	P2-C2	600	NA	SAW-01	SAW-003	W8	01.06.2017	Fillet	GMAW	201642236	KL	AIS16- 1701	MPI	C		
600-P2	300 Grd	P2-C3	600	NA	SAW-01	SAW-003	W9	01.06.2017	Fillet	GMAW	201642236	KL	AIS16- 1701	MPI	C		
600-P2	300 Grd	C3-C4	600	NA	SAW-01	SAW-003	W10	01.06.2017	Fillet	GMAW	201642236	KL	AIS16- 1701	MPI	C		
600-P2	300 Grd	C3-C3	600	10mm	SAW-01	SAW-003	W11	01.06.2017	SBBW	GMAW	201642236	KL	AIS16- 1702	UT	C		
600P2	300 Grd	P2-C3	600	NA	SAW-01	SAW-003	W12	01.06.2017	Fillet	GMAW	201642236	KL	AIS16- 1701	MPI	C		


D3 Weld map sample drawing



### D4 Non-destructive test request sample form

										<b>Non-Destructive Test Request (NDTR)</b>	
ITP No. BC 1234										Page: 1 of 1	
Project Details										Item Details	
<b>Project:</b> Big Creek Pump Station <b>Contract:</b> XX										<b>Test Date:</b> 13/05/05 <b>Test Location:</b> Big Creek	
Drawing No	Weld No.	Welder ID	Welding Process(s)	OD $\emptyset$ Tested and Wall Thickness (mm)	Material Type (AS/NZS 3678:1996)	DPI Required (Yes/No)	MPI Required (Yes/No)	R/T Required (Yes/No)	U/T Required (Yes/No)	Visual inspection	Other
XXXX-XXXX	FW001	SAWEPJB01	GMAW	356, 10	Carbon Steel Grade 250	No	Yes	No	No	20%	
	FW002	SAWEPJB01	GMAW	356, 10	Carbon Steel Grade 250	No	Yes	No	Yes		
	SW008	SAWEPJB01	GMAW	457, 10	Stainless Steel Grade 316	No	No	Yes	No		
	SW0020	SAWEPJB01	GMAW	457, 10	Stainless Steel Grade 316	Yes	No	Yes	No		
XXXX-XXXX	FW0012	SAWBWJS01	MMAW	610, 10	Carbon Steel Grade 350	No	Yes	No	No		
	FW0030	SAWBWJS01	MMAW	610, 10	Carbon Steel Grade 350	No	Yes	No	No		

D5 Piping fabrication checklist sample form

		<b>Piping Fabrication Checklist</b>	
<b>Page:</b>		<b>1 of 2</b>	
<b>Project</b>		<b>Contract no</b>	
<b>Item description</b>			
<b>Drawing no</b>			
<b>Standard</b>		<b>Class</b>	
<b>Inspection / Activity</b>		<b>Supervisor</b>	<b>SAW Representative</b>
<b>1.0</b>	<b>Material complies with specified requirements</b>		
<b>2.0</b>	<b>Weld Procedures issued/approved</b>		
<b>3.0</b>	<b>Welder Qualification Records, issued/approved</b>		
<b>3.1</b>	<b>Pre-Welding Checks</b>		
3.1.1	Dimensional Checks to drawings acceptable		
3.1.2	Weld Preparation acceptable		
3.1.3	Flanges Aligned and acceptable		
3.1.4	Consumable Verification		
<b>3.2</b>	<b>Production Welding Checks</b>		
.1	Preheat Requirements		
3.2.2	Root Run Visual Check (Random)		
3.2.3	Hot pass Visual Check (Random)		
3.2.4	Capping Run(s) Visual Check		
3.2.5	WPS Parameter Check (Random) including Preheat Temp. as applicable		
3.2.6	100% Visual Inspection Completed & acceptable (see back of form)		
<b>3.3</b>	<b>Post Welding Check</b>		
3.3.1	Weld Visual (AS 1554-1 Table 2) Acceptable		
3.3.2	Weld Visual (AS 4037) Acceptable		
3.3.3	POST Weld Heat Treatment Acceptable (If applicable)		
<b>4.0</b>	<b>Dimension Check to Drawing acceptable</b>		
<b>4.1</b>	<b>NDT completed &amp; acceptable</b>		
<b>5.0</b>	<b>Identification/ Traceability</b>		
<b>5.1</b>	<b>Pipe Spool Identification acceptable</b>		
<b>6.0</b>	<b>Surface Treatment Requirements E.g., Passivation. Buffing / Polishing</b>		
<b>6.1</b>	<b>Surface Treatment acceptable (if applicable)</b>		



D6 Manufacturers data report (MDR) sample index

Manufacturers Data Report	
<b>Project:</b>	
<b>Contract:</b>	
<b>Date:</b>	
Contents	Page no.
<b>Section A</b>	
Inspection & Test Plan (ITP)	
Checksheets	
<b>Section B</b>	
As-Built Drawings (Weldmap)	
<b>Section C</b>	
Welding Procedures	
<b>Section D</b>	
Welding & NDT Record Sheet	
<b>Section E</b>	
Index of Enclosed NDT Reports	
Visual Inspection Report	
Non-Destructive Examination Reports	
<b>Section F</b>	
Pressure Test Reports	
<b>Section G</b>	
Protective Coating Reports	
<b>Section H</b>	
Miscellaneous	
Materials Certificates	
Welding Consumable Records	
Welder Qualification Records	
NDT % of Production Welds	
NDT % of Welders Production Welds	
<b>Key: NR=Not Required</b>	

## E Audit outcome letter (sample)



### **Audit Outcome - SA Water Technical Standard (TS 0420) – Approved Fabricator**

I am pleased to inform you that all corrective actions identified from SA Water's recent audit of your company's welding management system have been satisfactorily closed, and compliance to the requirements of SA Water's Technical Standard TS 0420 has been achieved.

With this successful audit outcome, coupled with over 12 months of successful weld reviews on SA Water projects, your company has now been listed as an Approved Fabricator in SA Water's Technical Standard TS 0420, which exempts your company from the 'Acceptance Prior to Commencement of Work' requirements provided in Section 3 of TS 0420.

The following conditions apply to this approval:

- 1) This approval is valid for **2 years** from the date of this letter.
  - a. Renewal of the Approved Fabricator listing is not automatic, and a written request shall be submitted to the Principal Engineer, Materials Science, at least 90 business days before the expiry of this approval.
- 2) Your company must remain active in delivering SA Water works.
  - a. The written request required in item 1 a) shall provide details of works delivered for SA Water projects over the period for which this approval is applicable.
- 3) Certification of your Quality Management System to ISO 9001 shall be maintained
- 4) Compliance to TS 0420 must be maintained
  - a. This also includes maintaining compliance to the latest version of TS 0420, as well as applicable Australian/International Standards.
- 5) Documentation required by Section 3 of TS 0420 must continue to be supplied to the SA Water Representative for individual projects.
- 6) Approved welding procedures must be used.
  - a. These are attached and have been provided with an SA Water approval stamp.
  - b. Weld reviews that have been returned with comments are excluded, until they are updated and resubmitted for approval per Section 3 of TS 0420.

Where the conditions above are not satisfied, or where uncontrolled welding operations occur, SA Water reserves the right to revoke Approved Fabricator status at its sole discretion, which would re-instate the continuous review process of TS 0420 Section 3.

Examples of uncontrolled welding operations include, but are not limited to the following:

- ISO 9001 certification of your Quality Management System is no longer valid or has been suspended/cancelled.
- There is no active workshop welding supervisor controlling welding operations on a continuous basis.
- Weld failures, faults or defects are identified, attributed to poor workmanship or lack of supervision by the Approved Fabricator.
- Weld procedures not approved by SA Water are being used.
- The requirements of TS 0420 are not being routinely adhered to by the welding fabricator.

Thank you for participating in the audit process, and congratulations on becoming an Approved Fabricator for SA Water.

## F

**Fabricators requiring independent inspection**

Fabricators listed below shall be subject to independent inspection, per the requirements of Section 6.2.1 of this Technical Standard.

- None listed at this time.