

Long Term Plan for Kangaroo Island

Stakeholder Reference Group Meeting 3

1 February 2018

Agenda

Acknowledgement of Country

Welcome and Apologies

Minutes of the previous Meeting (Meeting #2)

Review of open action items

Landscapes

Next Steps

Other Business

Acknowledgement of Country

We acknowledge and respect the traditional custodians of the land on which we meet.

We appreciate and thank them for their care of this land.

Welcome and Apologies

5 min
Aaron

Welcome everyone!

Welcome those attending for the first time.

Apologies received, delegates and information to be shared.

Minutes and Action Items

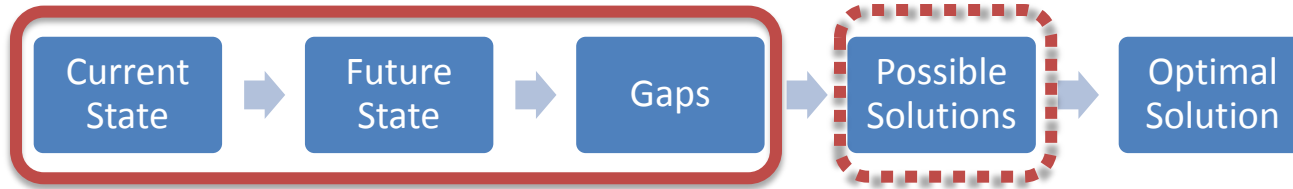
Minutes of last meeting tabled.

Review of action items

Recap: purpose of today's meeting

5 min
Erin

Understand

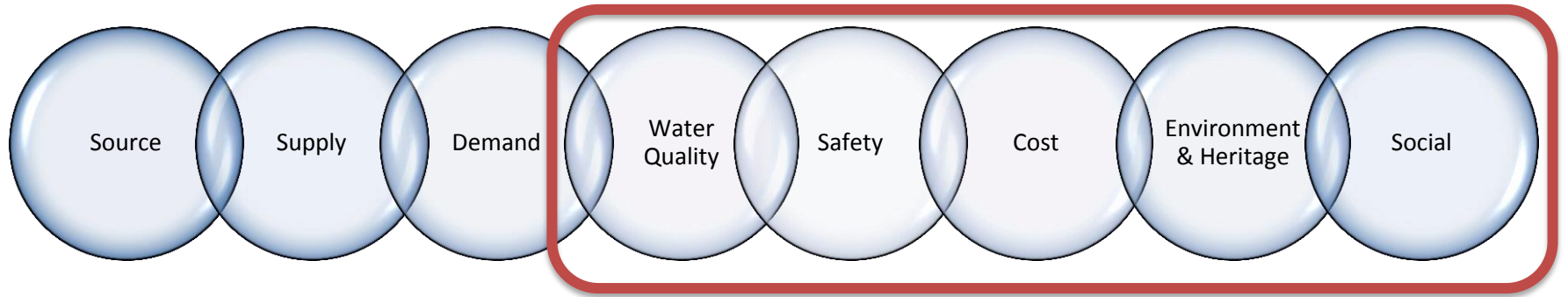


Deep-diving in to the rest of the “landscapes”

If we have time, allow ourselves to brain-storm some options for a better future – the viable and non-viable!

Landscapes

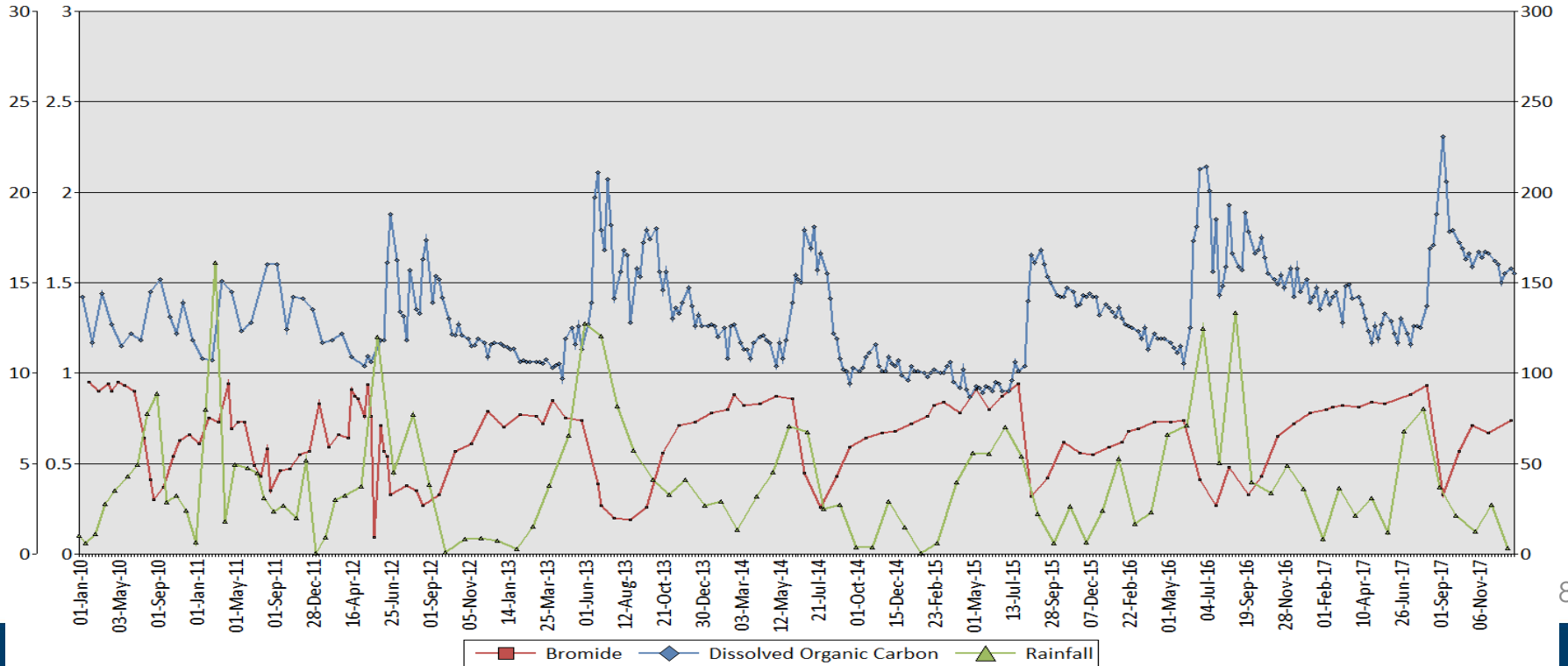
Range of criteria we need to understand and balance when evaluating options



Landscape: Water quality

10 min
Jason

22121 - Middle River Res BC Upper Beehive Floating Offtake



Landscape: Safety

10 min
Haydon

Corporate Goal: Zero Harm.

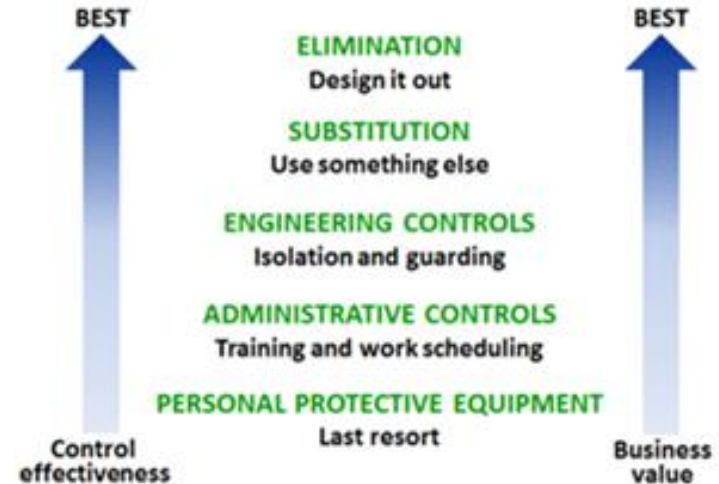
Safety of customers and the community

Water quality, safety of infrastructure and safety of our operations.

Strategic safety program investing in reactive and proactive safety.

SA Water manage Dam Safety by compliance with the ANCOLD Guidelines which rates societal risk. Middle River is below the ANCOLD limit of tolerability.

Memorandum of understanding between SA Water and SA CFS sets out the agreement on inspection and maintenance of hydrants.



Hierarchy of Controls

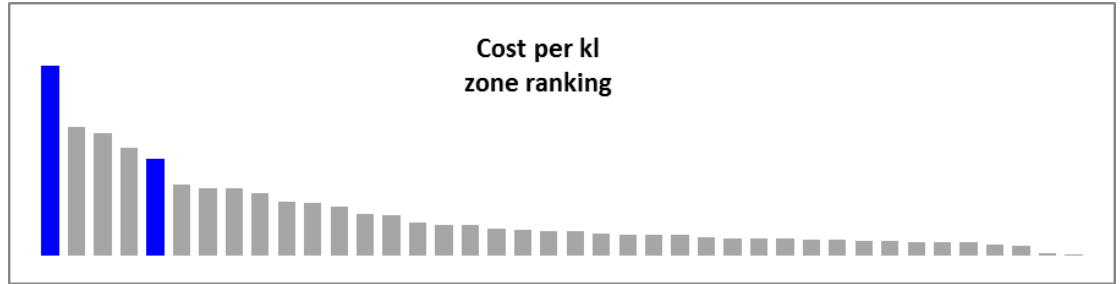
Page 9

Landscape: Cost

10 min
Haydon

Water supply cost /kl includes:

- Network Operating
- Water treatment Operating
- Depreciation
- Return On Assets



Discussion:

- Feedback on use and uptake of smart meters
- Feedback on appetite for non-potable supplies

Landscape: Environment & Heritage

10 min
Tara



LEGEND

EPA Aquatic Health 2013

▲ Very Good

▲ Good

▲ Fair

▲ Poor

— Major rivers

■ Waterbodies

■ Remnant vegetation

Landscape: Social

10 min
Erin

2009 Long Term Plan Social Criteria:

- Amenity value of infrastructure (e.g. impact on landscape)
- Community acceptability of option
- Heritage impacts
- Public / private economic benefit or loss

Discussion:

- Feedback on what criteria we should use to evaluate the options.
- Feedback on how SA Water can work together with local communities to be the water utility our community expects.

Next Steps - Options

15 min
Erin

Now that you've seen more of the gaps and opportunities, lets let ourselves have a little brainstorm ...

“I reckon we should...”

“Why don't you...”

Next Steps – Options

10 min
Erin

Meeting 1

- What matters to you and the communities you represent

Meeting 2

- Start confirming objectives and planning assumptions e.g. growth, climate change

Meeting 3

- Complete confirmation of objectives and planning assumptions

Meeting 4

- Understanding the Multi Criteria Analysis approach
- Criteria and weightings for evaluating options

Meeting 5 - 6

- Assign criteria to options to rank them
- Feedback on sensitivity analysis and recommendations

Ongoing - conduit for information to and from the communities you represent



Other Business & Next Meeting

10 min
Aaron

Any other business?

What do you need to consult with your communities in advance of next meeting?

Confirm dates and locations for next few meetings

Thank you.

